

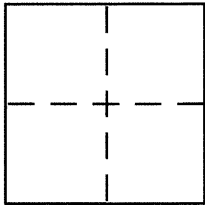
# CORNER RECORD

Document Number CR 9539

City of OAKLAND

County of ALAMEDA, California

Brief Legal Description LOTS 2952 & 2953 PIEDMONT PINES (14M40)



## CORNER TYPE

Government Corner ☐ Control ☐  
 Meander ☐ Property ☒  
 Rancho ☐ Other ☐  
 Date of Survey DEC. 2, 2016

## COORDINATES (Optional)

N. \_\_\_\_\_  
 E. \_\_\_\_\_  
 Zone \_\_\_\_\_ NAD27 ☐ NAD83 ☐  
 NAD83 Epoch \_\_\_\_\_  
 Elev. \_\_\_\_\_  
 Vert. Datum: NGVD29 ☐ NAVD88 ☐  
 Meas. Units: Metric ☐ Imperial ☐

Corner – Left as found ☐ Found and tagged ☐ Established ☒ Reestablished ☐ Rebuilt ☐

Identification and type of corner found: Evidence used to identify or procedure used to establish or reestablish the corner:

SEE OTHER SIDE

A description of the physical condition of the monument as found and as set or reset:

SEE OTHER SIDE

## SURVEYOR'S STATEMENT

This Corner Record was prepared by me or under my direction in conformance with

the Land Surveyor's Act on DECEMBER 5, 2016

Signed Robert J. Brunel P.L.S or R.C.E. No. 4961

## COUNTY SURVEYOR'S STATEMENT

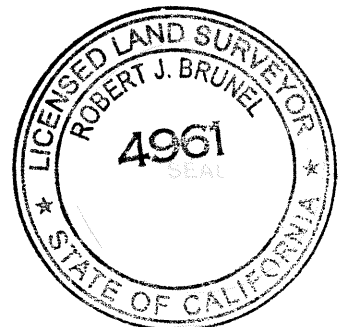
This Corner Record was received 12-12-2016

and examined and filed 01-24-2017

Signed Albert Jordan P.L.S or R.C.E. No. 6623

Title Deputy County Surveyor

County Surveyor's Comment \_\_\_\_\_



# CORNER RECORD

LOTS 2952 AND 2953  
PIEDMONT PINES (14 M 40)

CITY OF OAKLAND, COUNTY OF ALAMEDA, CALIFORNIA

DECEMBER 2, 2016 SCALE: 1" = 40'

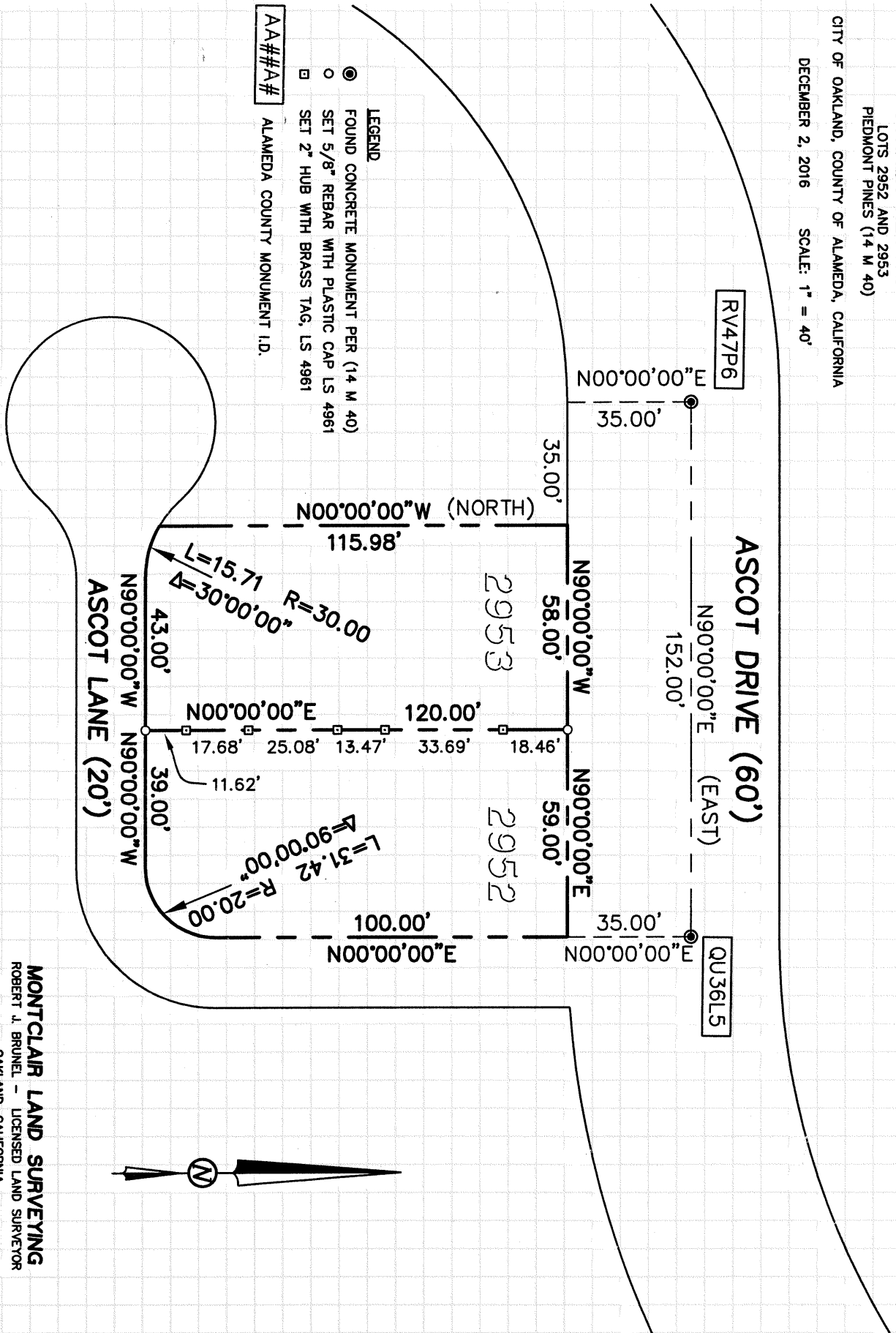
## ASCOT DRIVE (60')

RV47P6

N90°00'00"E (EAST)

QU36L5

- LEGEND**
- FOUND CONCRETE MONUMENT PER (14 M 40)
  - SET 5/8" REBAR WITH PLASTIC CAP LS 4961
  - SET 2" HUB WITH BRASS TAG, LS 4961
  - AA##A# ALAMEDA COUNTY MONUMENT I.D.



**MONTCLAIR LAND SURVEYING**  
ROBERT J. BRUNEL - LICENSED LAND SURVEYOR  
OAKLAND, CALIFORNIA

F.B. NO. 199

ASCOT CR.DWG

JOB NO. 116-599