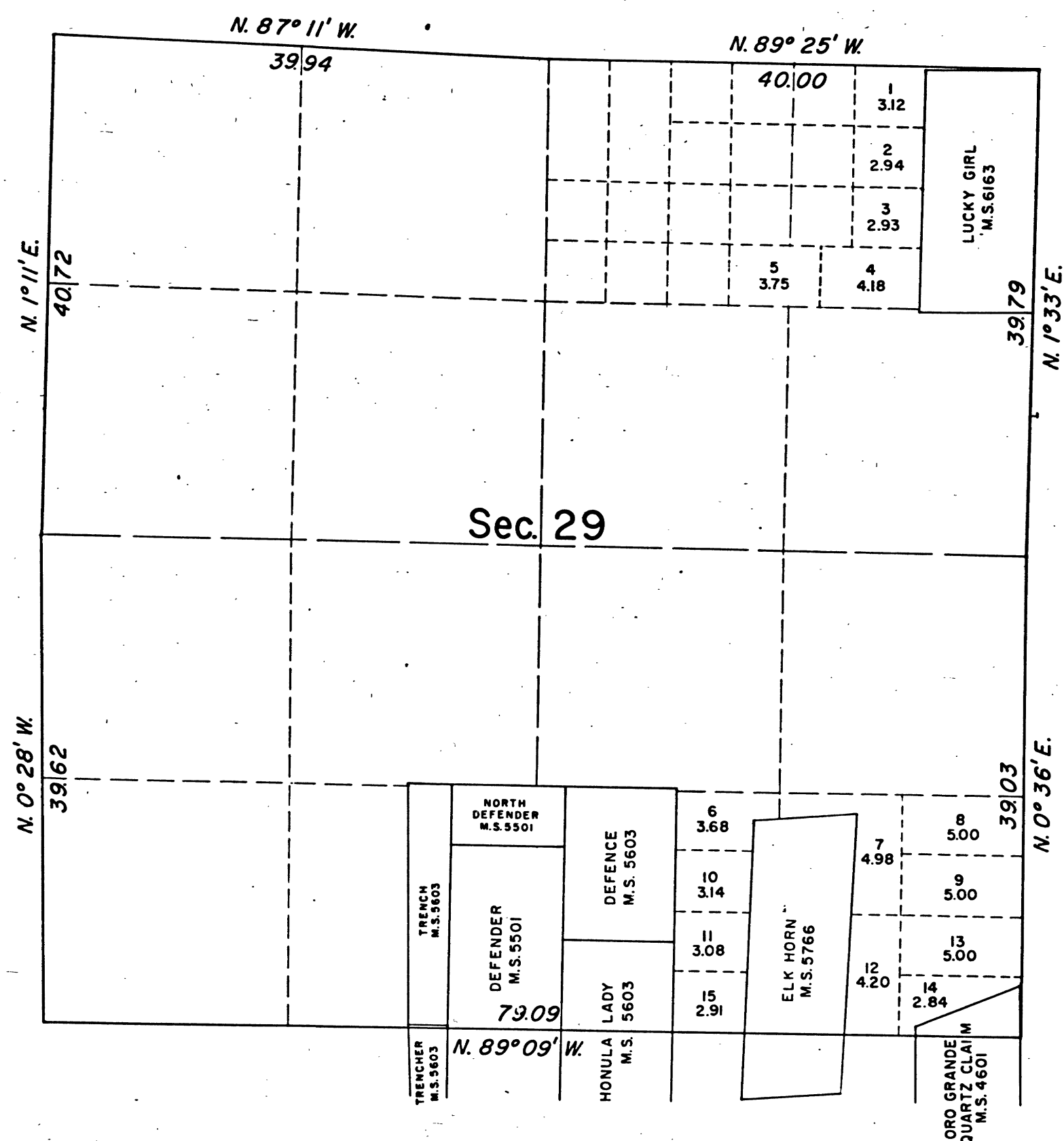


TOWNSHIP 7 NORTH, RANGE 13 EAST, OF THE MOUNT DIABLO MERIDIAN, CALIFORNIA.  
SUPPLEMENTAL PLAT OF SECTION 29



This supplemental plat of Section 29, T. 7 N., R. 13 E., of the Mount Diablo Meridian, California, showing amended lottings created by the segregation of Mineral Surveys Nos. 4601, 5501, 5603, 5766, and 6163, is based upon the plat approved March 29, 1878, and the mineral survey records.

UNITED STATES DEPARTMENT OF THE INTERIOR  
BUREAU OF LAND MANAGEMENT  
Washington, D.C. January 31, 1962

This plat, showing amended lottings, is based upon the official records, and having been correctly prepared in accordance with the regulations, is hereby accepted.

For the Director

*E. J. Pennington*

Chief, Division of Engineering

