

SHEET 2 OF 6 SHEETS  
SCALE: 1" = 60'

# FINAL MAP TRACT NO. 37-39

COUNTY OF MONO, CALIFORNIA.

MAY 1980

GERALD F. OLDENBURG, L.S. 3246

WILLIAMSON AND SCHMID, CIVIL ENGINEERS

70 LOTS AND LOTS A, B AND C

58.505 ACRES GROSS

8.689 ACRES/STREET AREA

## BASIS OF BEARINGS:

BEARINGS SHOWN HEREON ARE BASED ON THE WLY LINE OF PARCEL 1 OF P.M. NO. 37-65 BEING N.0°25'05"W. PER P.M. NO. 37-65, VOL. 2, P.M. PGS 7, 7A AND 7B, RECORDS OF MONO COUNTY, CALIFORNIA.

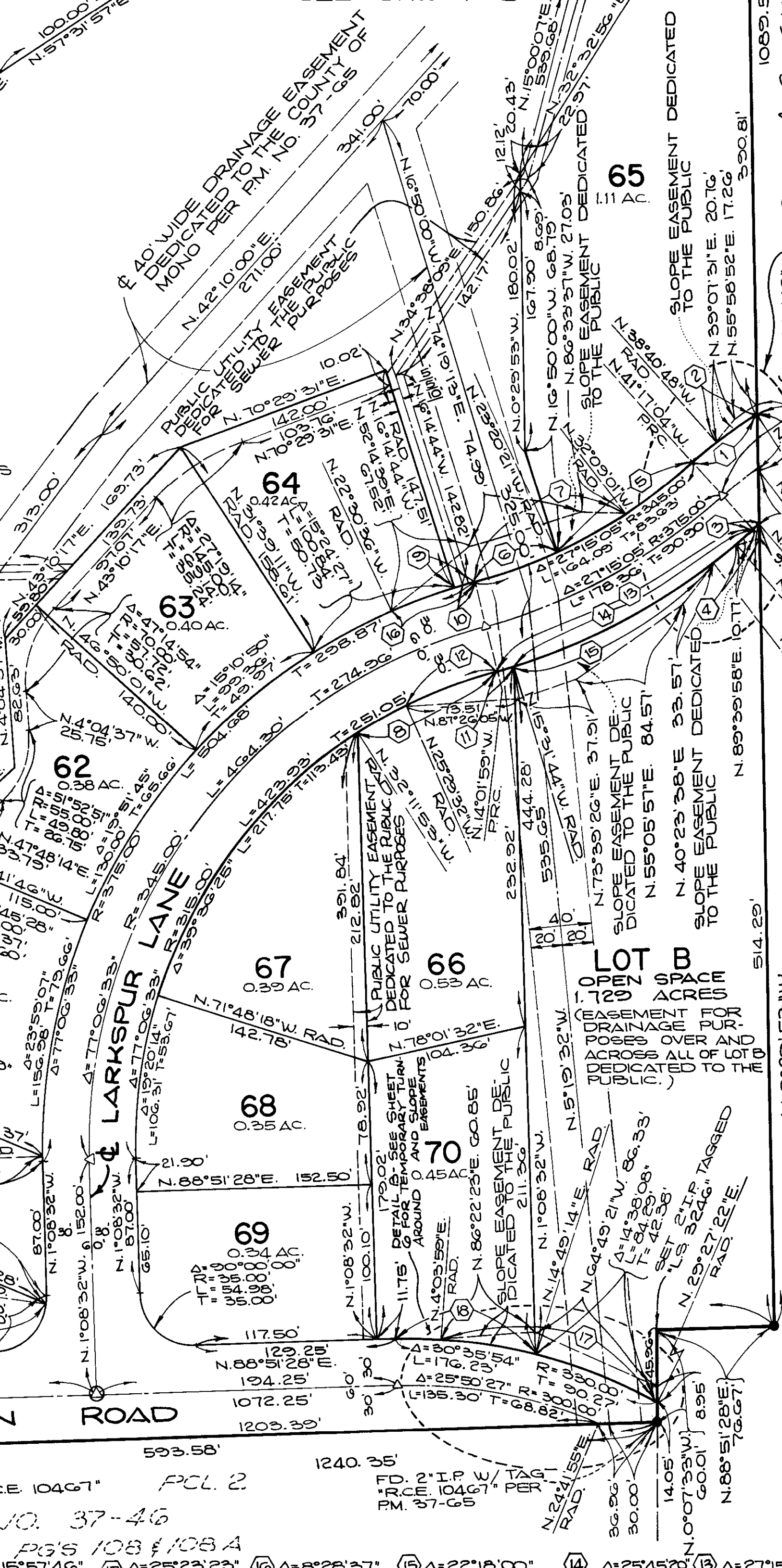
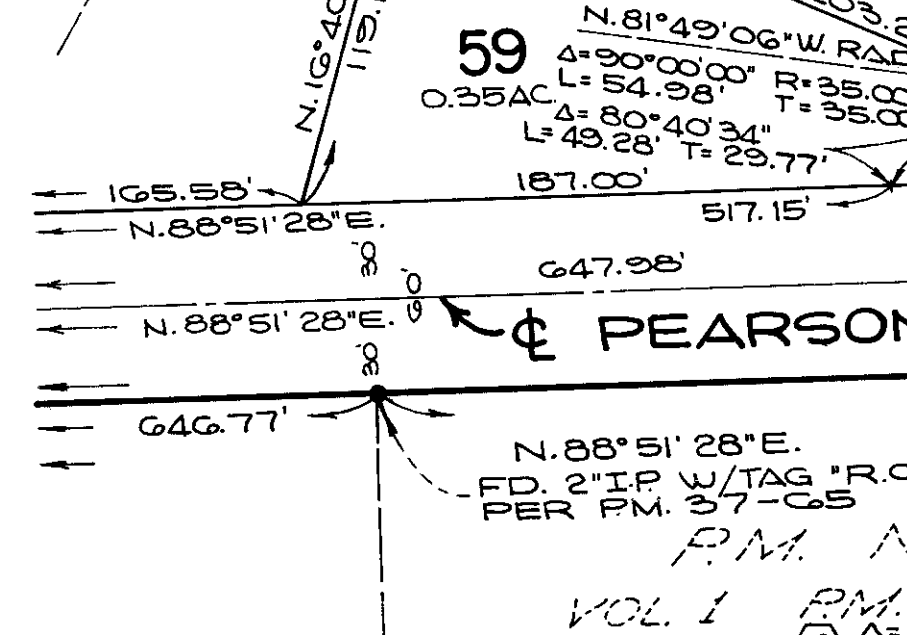
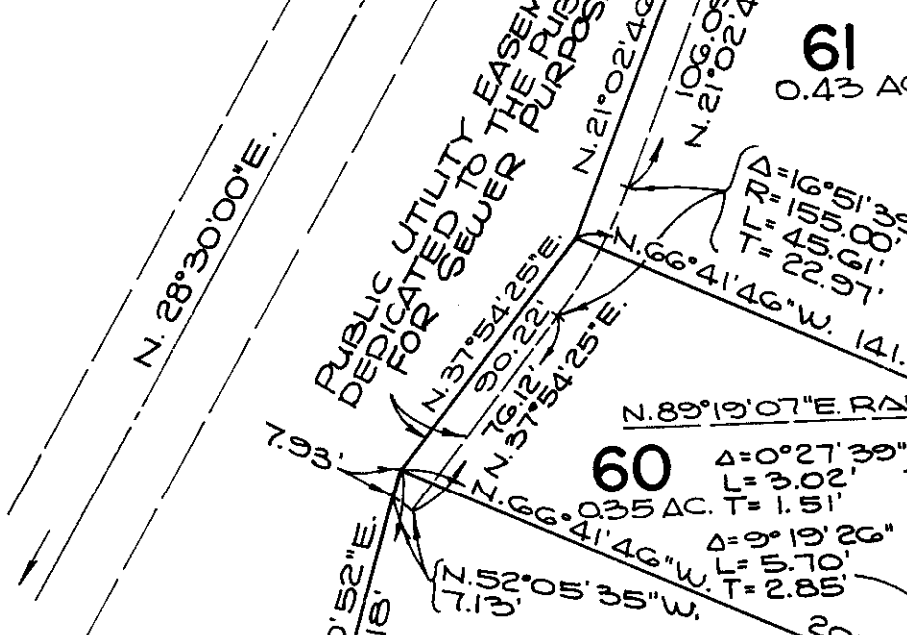
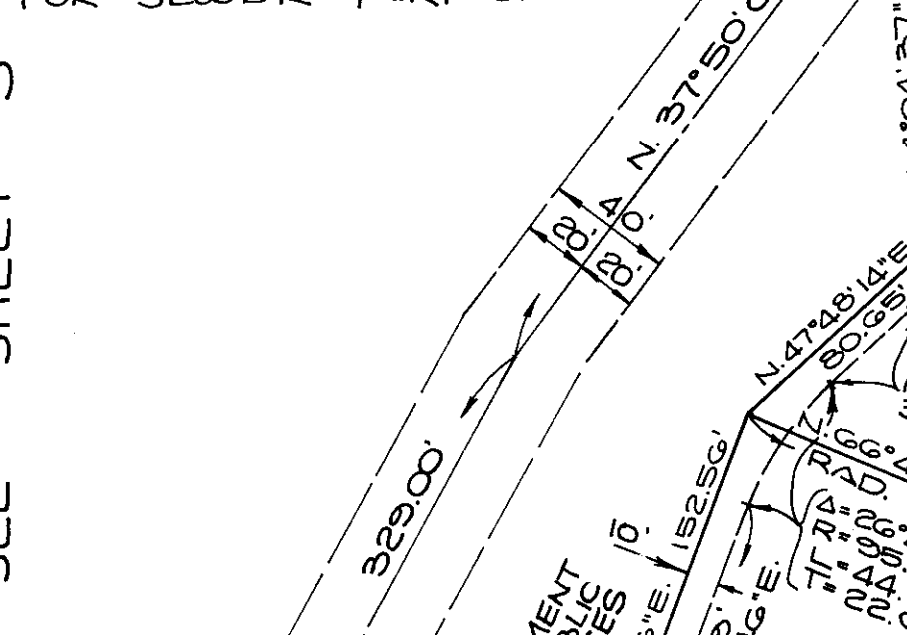
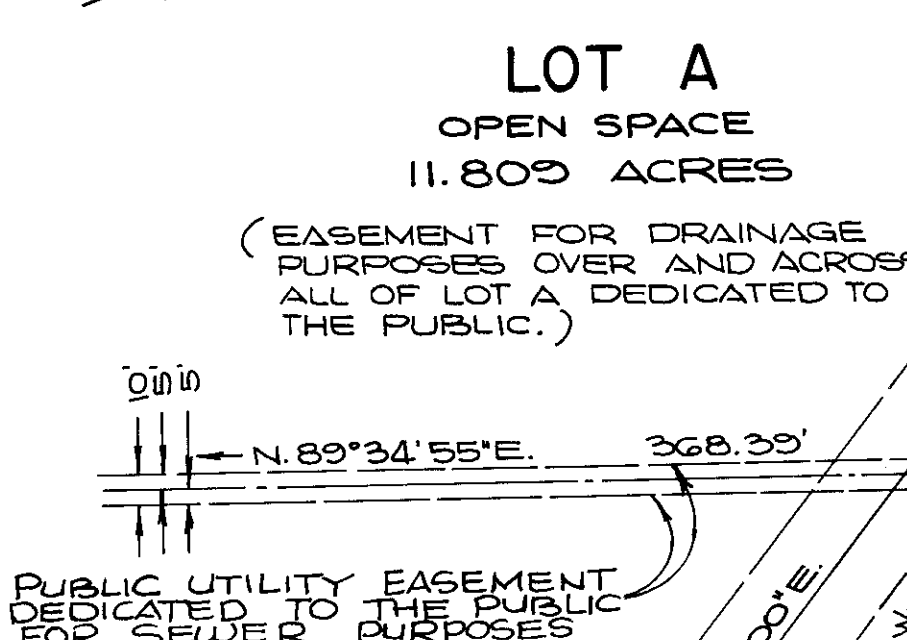
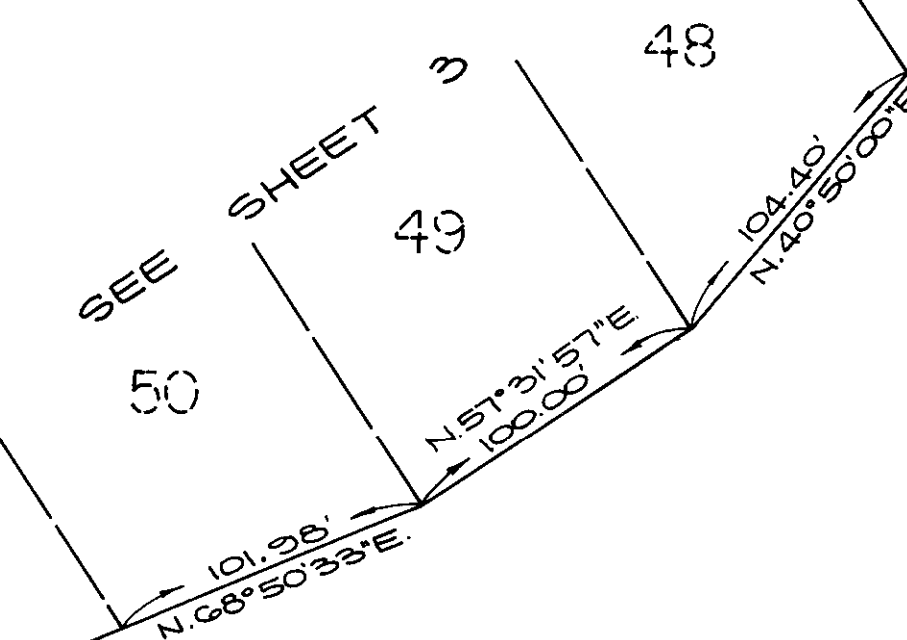
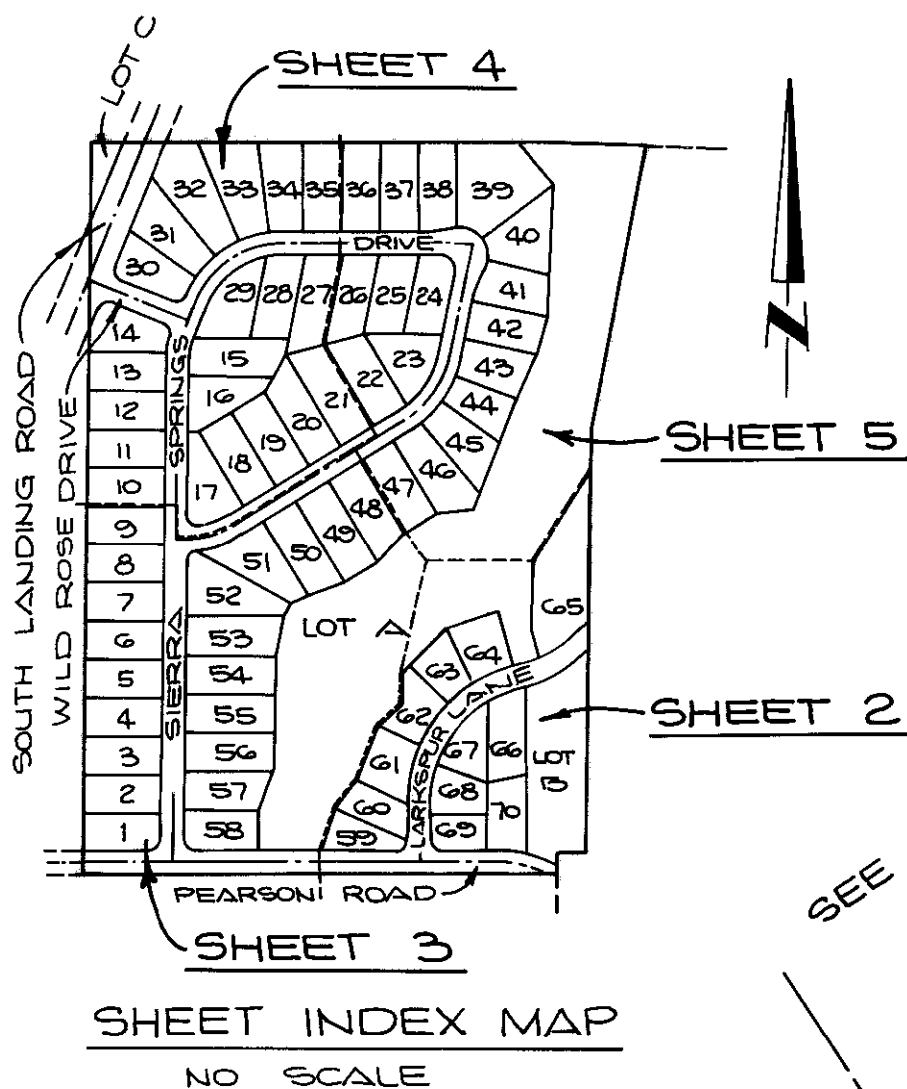
## NOTE:

INDICATES THE BOUNDARY OF THE LAND BEING SUBDIVIDED BY THIS MAP.

## MONUMENT NOTES:

- INDICATES FOUND 2" I.P. W/ TAG "L.S. 3246" PER P.M. NO. 37-65, UNLESS OTHERWISE NOTED.
- INDICATES WELL MON. W/ 2" I.P. TAGGED "L.S. 3246" TO BE SET.
- 1" I.P. W/ TAG "L.S. 3246" TO BE SET AT ALL LOT CORNERS, UNLESS OTHERWISE NOTED.
- INDICATES 1" I.P. W/ TAG "L.S. 3246" TO BE SET 12" BELOW SURFACE W/ 8" SPIKE & WASHER STAMPED "L.S. 3246" TO BE SET ON SURFACE.

SEE SHEET 5



## CURVE DATA

1	$\Delta = 8^{\circ}28'51''$ $T = 248.85'$ $R = 244.47'$
2	$\Delta = 10^{\circ}05'51''$ $T = 6.94'$ $R = 6.94'$
3	$\Delta = 0^{\circ}10'01''$ $T = 0.01'$ $R = 0.01'$
4	$\Delta = 1^{\circ}58'50''$ $T = 1.08'$ $R = 1.08'$
5	$\Delta = 1^{\circ}56'43''$ $T = 1.08'$ $R = 1.08'$
6	$\Delta = 2^{\circ}08'08''$ $T = 54.47'$ $R = 54.47'$
7	$\Delta = 9^{\circ}18'22''$ $T = 28.04'$ $R = 28.04'$
8	$\Delta = 15^{\circ}01'02''$ $T = 109.08'$ $R = 109.08'$
9	$\Delta = 15^{\circ}09'54''$ $T = 109.08'$ $R = 109.08'$
10	$\Delta = 2^{\circ}12'45''$ $T = 14.48'$ $R = 14.48'$
11	$\Delta = 1^{\circ}27'17''$ $T = 3.75'$ $R = 3.75'$
12	$\Delta = 1^{\circ}29'45''$ $T = 4.05'$ $R = 4.05'$

J.N. 78 166.1

SEE CERTIFICATE OF CORRECTION REC'D IN DOC. # 2003011631