

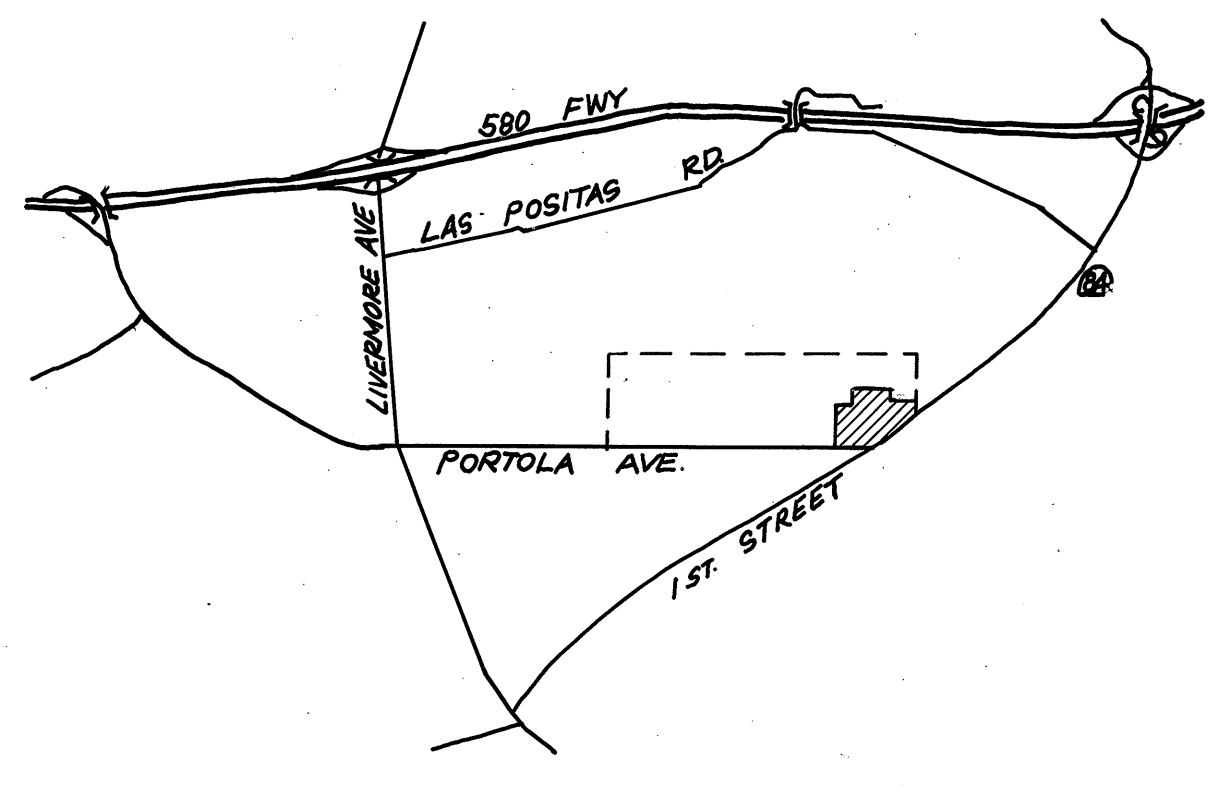
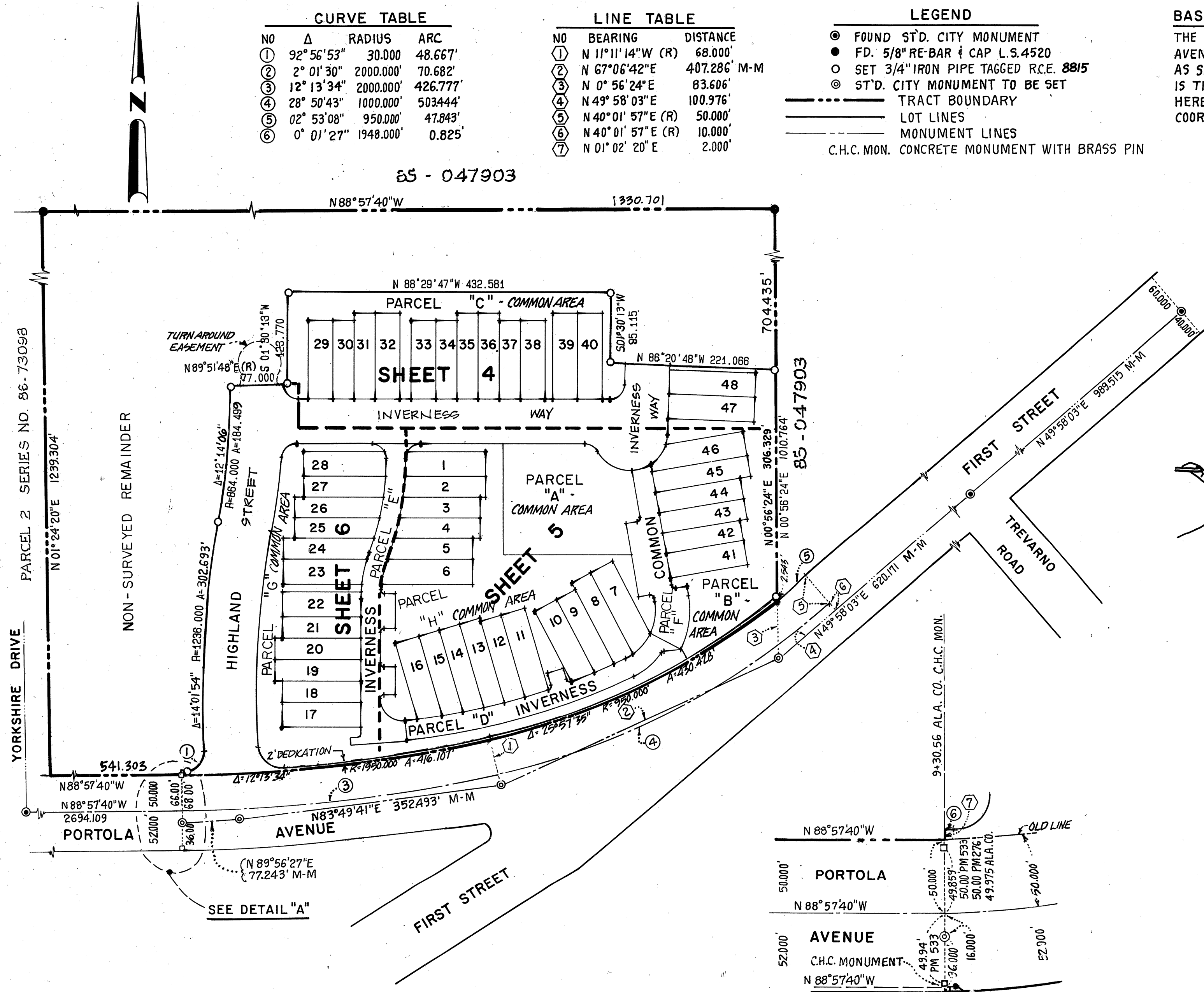
TR 5403 map BK 177 Pg 19

NO	Δ	RADIUS	ARC
①	92° 56' 53"	30.000	48.667'
②	2° 01' 30"	2000.000	70.682'
③	12° 13' 34"	2000.000	426.777'
④	28° 50' 43"	1000.000	503.444'
⑤	02° 53' 08"	950.000	47.843'
⑥	0° 01' 27"	1948.000	0.825'

NO	BEARING	DISTANCE
①	N 11° 11' 14" W (R)	68.000'
②	N 67° 06' 42" E	407.286' M-M
③	N 0° 56' 24" E	83.606'
④	N 49° 58' 03" E	100.976'
⑤	N 40° 01' 57" E (R)	50.000'
⑥	N 40° 01' 57" E (R)	10.000'
⑦	N 01° 02' 20" E	2.000'

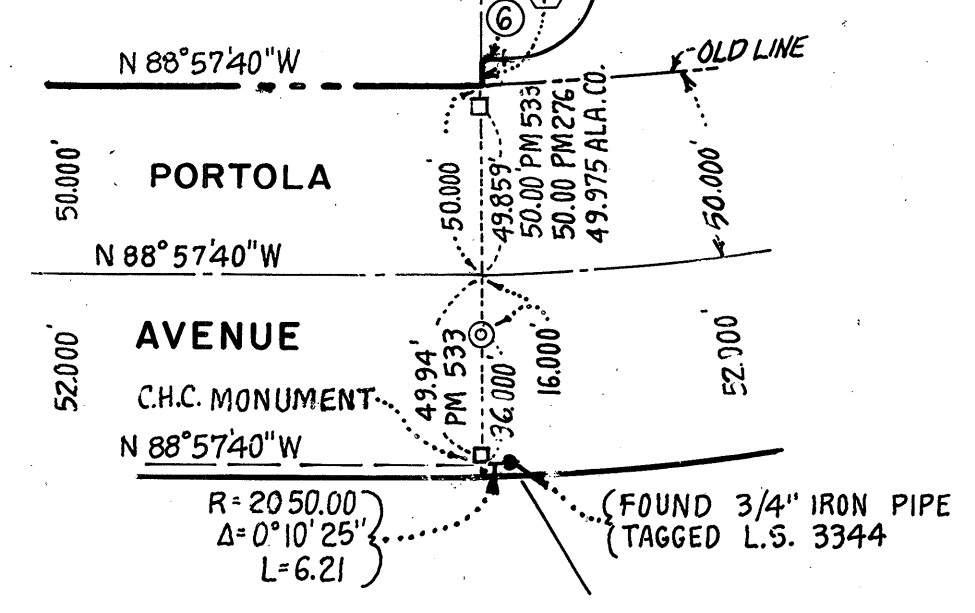
- LEGEND**
- ⊙ FOUND ST'D. CITY MONUMENT
 - FD. 5/8" RE-BAR & CAP L.S. 4520
 - SET 3/4" IRON PIPE TAGGED R.C.E. 8815
 - ⊙ ST'D. CITY MONUMENT TO BE SET
 - TRACT BOUNDARY
 - LOT LINES
 - MONUMENT LINES
 - C.H.C. MON. CONCRETE MONUMENT WITH BRASS PIN

BASIS OF BEARINGS:
 THE MONUMENT LINE ON PORTOLA AVENUE TAKEN AS N 88° 57' 40" W AS SHOWN ON TRACT 2691 (50 M 85) IS THE BASIS OF BEARINGS USED HEREON, AND IS BASED ON CALIFORNIA COORDINATE SYSTEM ZONE III.



VICINITY MAP
N.T.S.

BOUNDARY AND INDEX MAP
 SCALE: 1" = 100'



DETAIL "A"
 NO SCALE

TRACT 5403

CITY OF LIVERMORE
 ALAMEDA COUNTY, CALIFORNIA
 PLUMMER & BABBITT CIVIL ENGINEERING, INC.
 PLEASANTON, CALIFORNIA

SCALE: 1" = 100'-0" OCTOBER 1987

BK 177 Pg 19