

# CORNER RECORD

Agency Index

BK 98 PG 68

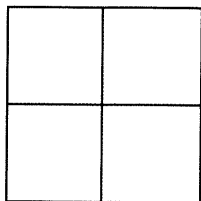
Document Number

CR 10096

City of BERKELEYCounty of ALAMEDA, CaliforniaBrief Legal Description 2-1/8" BRASS DISK MONUMENT LOCATED AT THE INTERSECTION OF JONES ST AND SAN PABLO AVENUE

## CORNER TYPE

## COORDINATES (Optional)



Government Corner ☐ Control ☒  
Meander ☐ Property ☐  
Rancho ☐ Other ☐

N. \_\_\_\_\_ E. \_\_\_\_\_

Elevation \_\_\_\_\_

Units Metric ☐ U.S. Survey Foot ☒

Horizontal Datum \_\_\_\_\_

Zone \_\_\_\_\_ Epoch Date \_\_\_\_\_

Vertical Datum \_\_\_\_\_

☐ Complies with Public Resources Code §§8801-8819☐ Complies with Public Resources Code §§8890-8902Date of Survey 5/11/17PLS Act Ref: ☐ 8765(d)☒ 8771☐ 8773☐ Other:Corner/  
Monument: ☒ Left as found☐ Established☐ Rebuilt☒ Pre-Construction☐ Found and tagged☐ Reestablished☐ Referenced☐ Post-Construction

Narrative of corner identified and monument as found, set, reset, replaced, or removed:

☒ See sheet #2 for description(s) :

FOUND 2-1/8" BRASS DISK WITH PUNCH IN MONUMENT WELL. STAMPED "DEPARTMENT OF TRANSPORTATION". CITY ID B0686

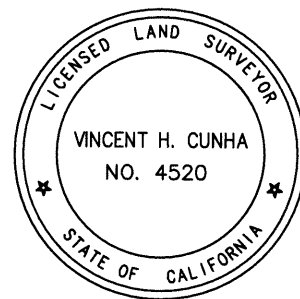
FOUND AND SET POINTS AS SHOWN ON PAGE 2.

THIS POINT WAS REFERENCED PRIOR TO A CONSTRUCTION PROJECT IN THE VICINITY.

THE TIES SHOWN HEREON ARE FOR THE PURPOSE OF PERPETUATING FOUND MONUMENTATION. NO CLAIM IS MADE AS TO THE RELATIONSHIP OF THE POINTS OR LINES SHOWN HEREON TO TRUE BOUNDARY LOCATION.

## SURVEYOR'S STATEMENT

This Corner Record was prepared by me or under my direction in conformance with

the Professional Land Surveyors' Act on MAY 19, 2017.Signed Vincent H. Cunha P.L.S. No. LS 4520  
VINCENT H. CUNHA

## COUNTY SURVEYOR'S STATEMENT

This Corner Record was received 1 JUNE, 2017and examined and filed 14 AUGUST, 2017.Signed Michael Rubner P.L.S. or R.C.E. No. 6843Title COUNTY SURVEYOR

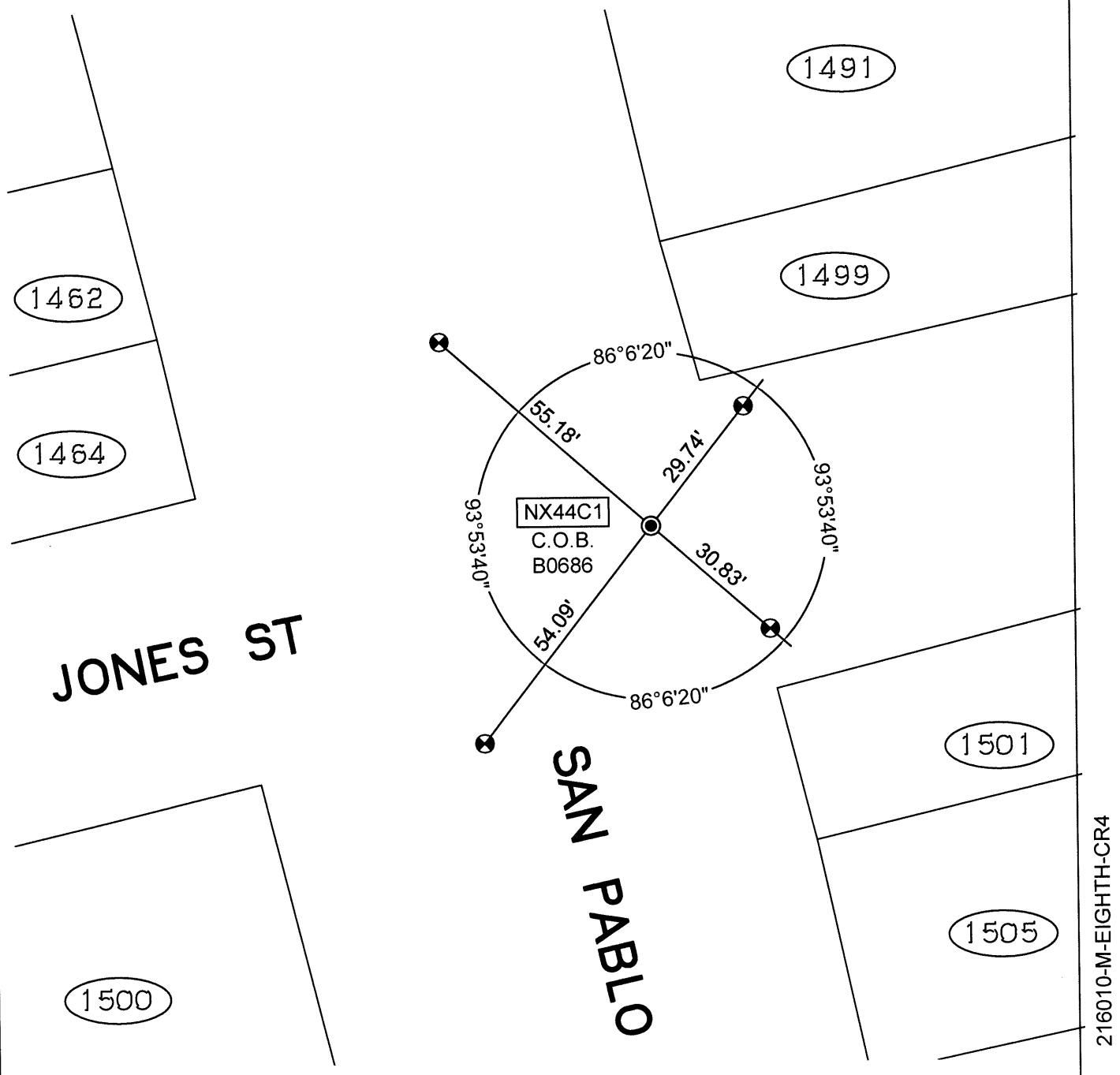
County Surveyor's Comment



SCALE: 1"=30'

## LEGEND

- FOUND BRASS DISK WITH PUNCH IN MONUMENT WELL
- ⊗ SET CUT CROSS IN WALK
- ✕ SET CUT CROSS IN CURB
- ✕ SET MAG AND SHINER
- SET REBAR & CAP STAMPED "CEI RP"
- AA##A# ALAMEDA COUNTY MONUMENT ID
- 19592 REFERENCE STREET ADDRESS



216010-M-EIGHTH-CR4