

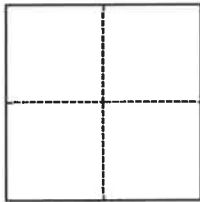
# CORNER RECORD

Agency Index BK 151 PG 02  
Document Number CR 16302

City of OAKLAND County of ALAMEDA, California  
Brief Legal Description CITY MONUMENT AT INTERSECTION OF 34TH STREET AND ETTIE STREET

## CORNER TYPE

## COORDINATES (Optional)



- ☐ Government Corner ☐ Control  
☐ Meander ☒ Property  
☐ Rancho ☐ Other

Date of Survey August 30, 2021

N. \_\_\_\_\_ E. \_\_\_\_\_  
Elevation \_\_\_\_\_  
Units ☐ Metric ☐ U.S. Survey Foot  
Horizontal Datum \_\_\_\_\_  
Zone \_\_\_\_\_ Epoch Date \_\_\_\_\_  
Vertical Datum \_\_\_\_\_  
☐ Complies with Public Resources Code §§8801-8819  
☐ Complies with Public Resources Code §§8890-8902

PLS Act Ref.: ☐ 8765(d) ☒ 8771 ☐ 8773 ☐ Other:  
Corner/  
Monument: ☒ Left as found ☐ Established ☐ Rebuilt ☒ Pre-Construction  
☐ Found and tagged ☐ Reestablished ☒ Referenced ☐ Post-Construction

Narrative of corner identified and monument as found, set, reset, replaced, or removed:  
☐ See sheet #2 for description(s):

FOUND MONUMENTS NORTHWEST OF THE INTERSECTION OF 34TH STREET AND ETTIE STREET. MONUMENTS SHOWN HEREON ARE TIED FOR PURPOSES TO PRESERVE THEIR LOCATION PRIOR TO REPAVEMENT, NO ATTEMPT WAS MADE TO DETERMINE THE RELATIONSHIP TO PROPERTY, CENTERLINE, OR RIGHT OF WAY LINES.

## SURVEYOR'S STATEMENT

This Corner Record was prepared by me or under my direction in conformance with  
the Professional Land Surveyors' Act on MARCH 1, 2023  
Signed [Signature] P.L.S. or R.C.E. No. 9177



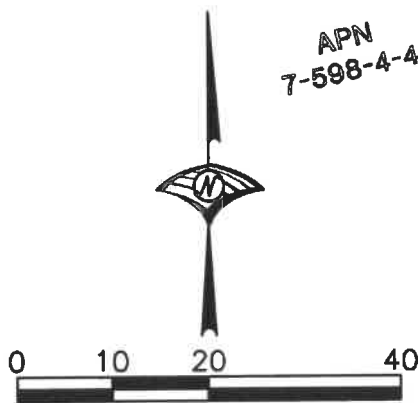
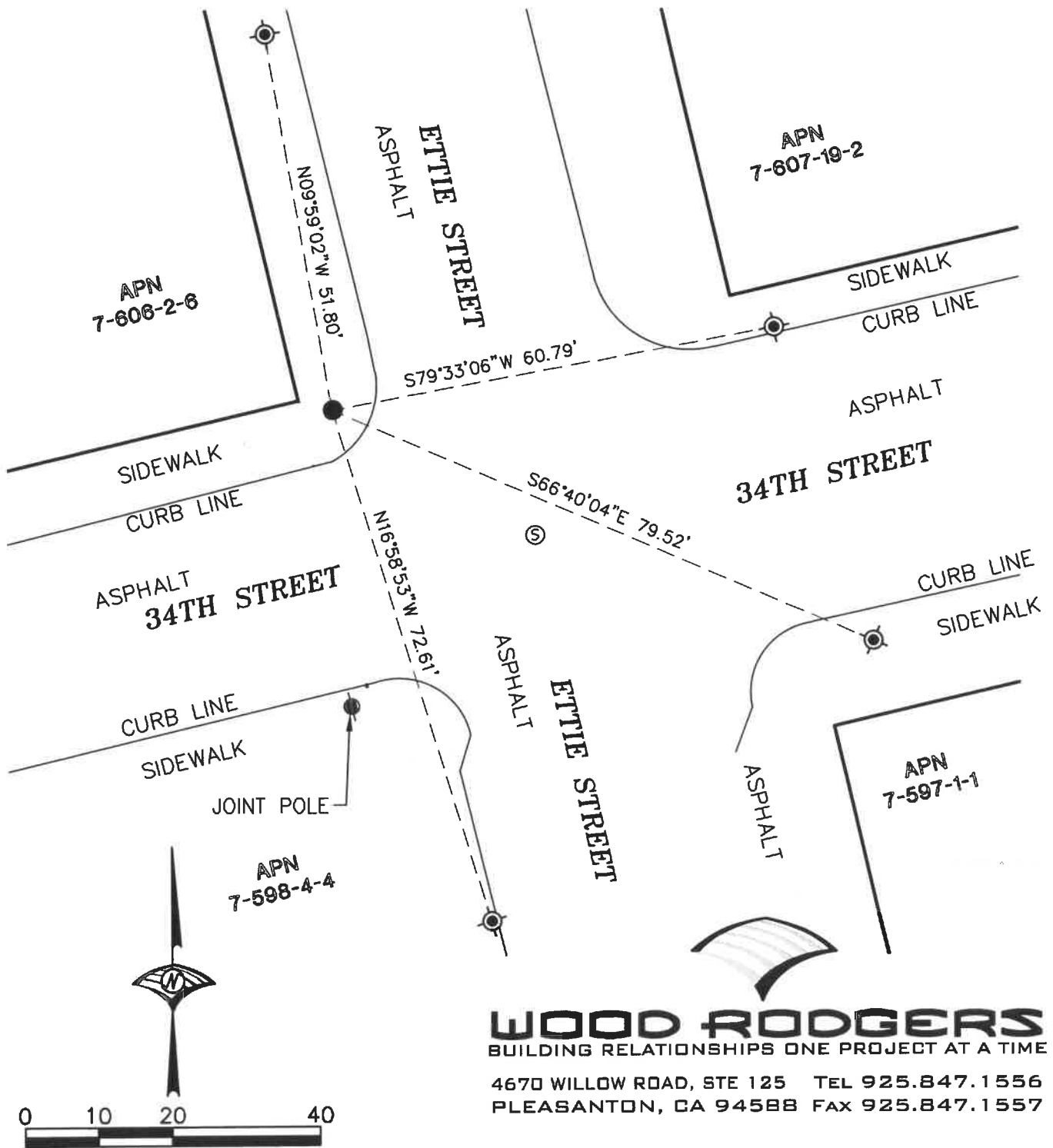
## COUNTY SURVEYOR'S STATEMENT

This Corner Record was received \_\_\_\_\_  
and examined and filed MAR 20 2023  
Signed D. Ian Wilson P.L.S. or R.C.E. No. 7010  
Title ALAMEDA COUNTY SURVEYOR  
County Surveyor's Comment \_\_\_\_\_



## LEGEND

- FOUND 1/4" ROD & WASHER IN CONCRETE IN MONUMENT WELL
- ⊗ SET MAG NAIL & WASHER IN CURB
- Ⓢ SEWER MANHOLE



SCALE: 1" = 20'

**WOOD RODGERS**  
BUILDING RELATIONSHIPS ONE PROJECT AT A TIME

4670 WILLOW ROAD, STE 125 TEL 925.847.1556  
PLEASANTON, CA 94588 FAX 925.847.1557

February 14, 2023

8785003