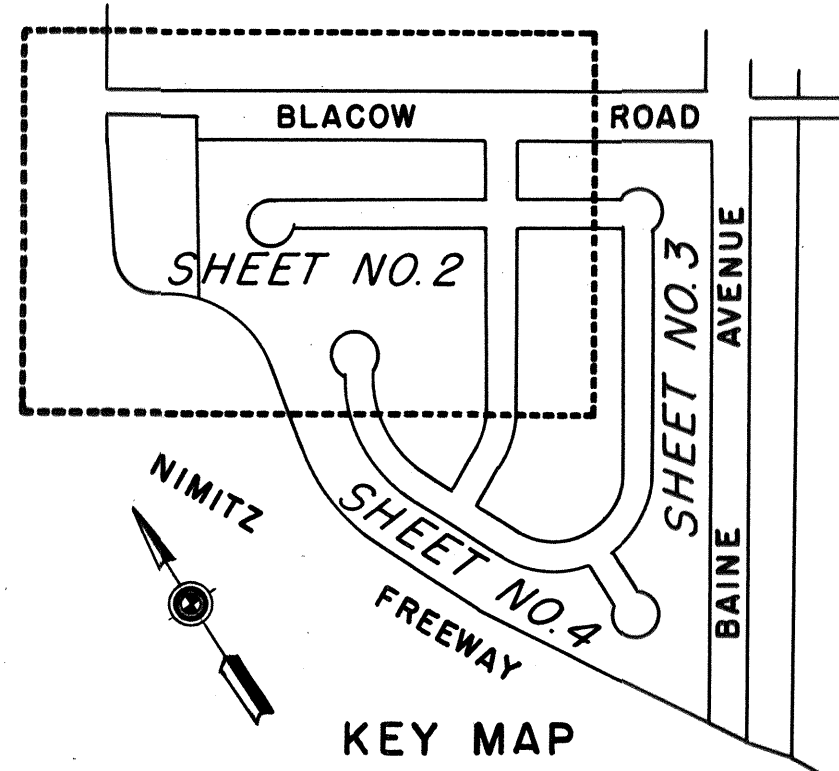
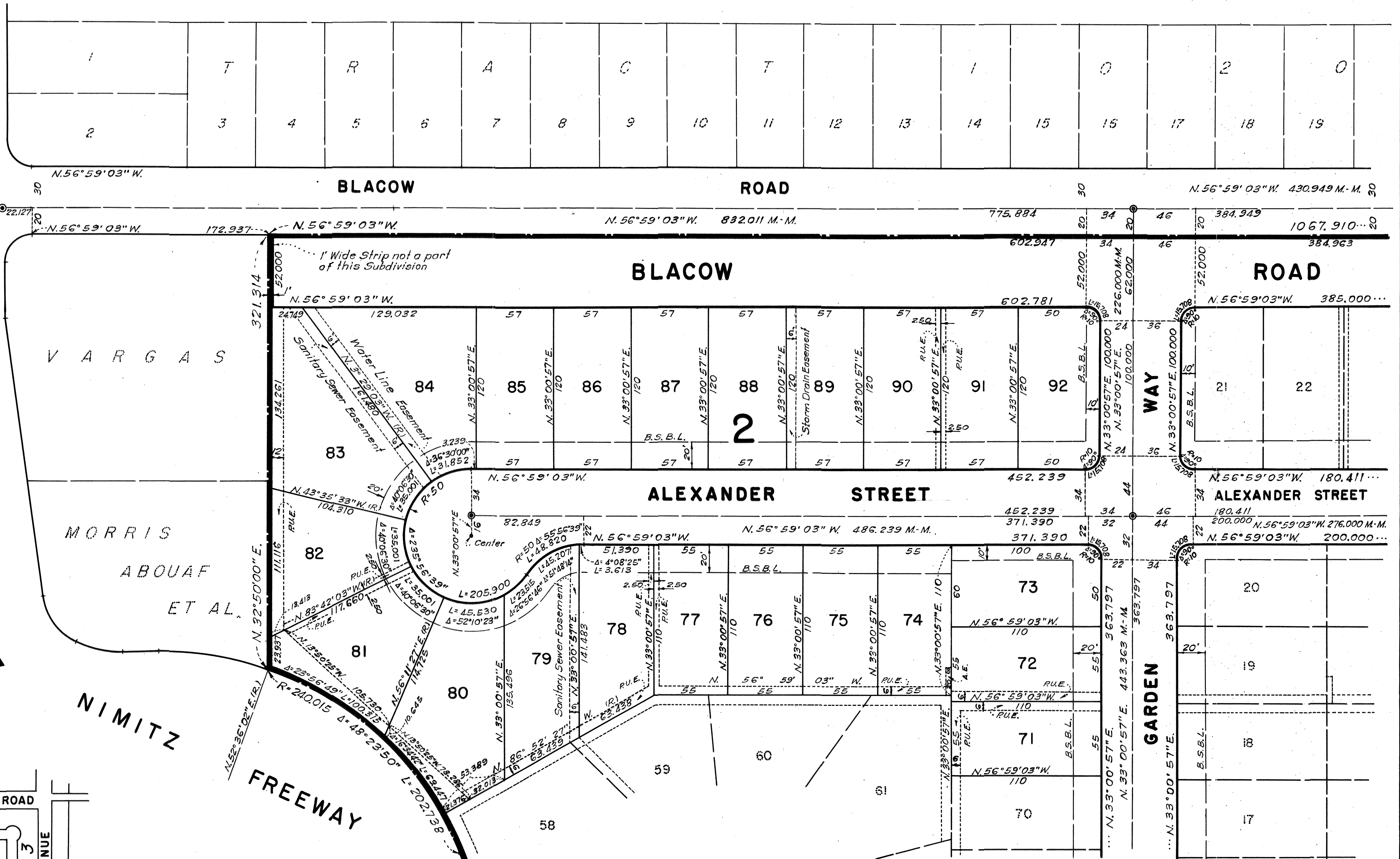


AVENUE

THORNTON

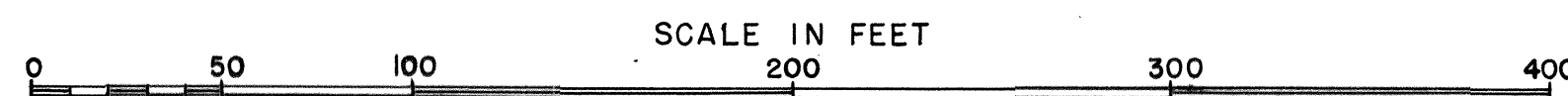


LEGEND:

- Existing monuments are shown thus
- Concrete monuments with cast iron frame and cover to be installed are shown thus
- Public utility easements are designated thus P.U.E.
- Anchor easements are designated thus A.E.
- Building set-back lines, to be as required by the Zoning Ordinance of the City of Fremont, are designated thus B.S.B.L.

BASIS OF BEARINGS:

"TRACT 1020" etc. filed September 6, 1950 in Book 30 of Maps at page 99 in the office of the County Recorder of Alameda County.



TRACT 2027 THORNTON GARDENS

IN THE CITY OF FREMONT
IN THE COUNTY OF ALAMEDA
CALIFORNIA AR 2041

FEBRUARY, 1959 SCALE: 1 INCH = 50 FEET

John A. Mancini,

Registered Civil Engineer No. 1592

MADE

Sheet No. 2 of 4 Sheets

TR.
2027