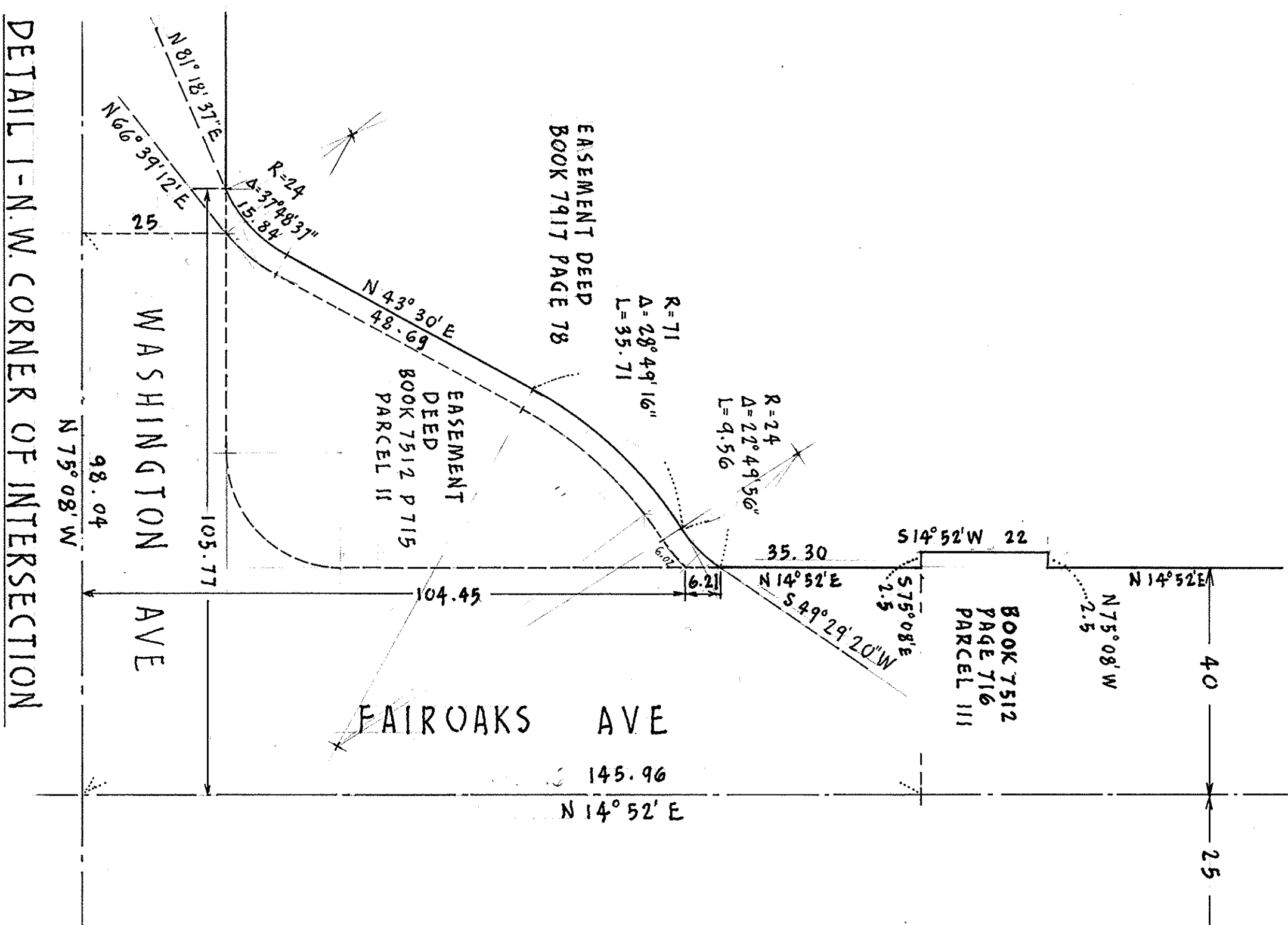
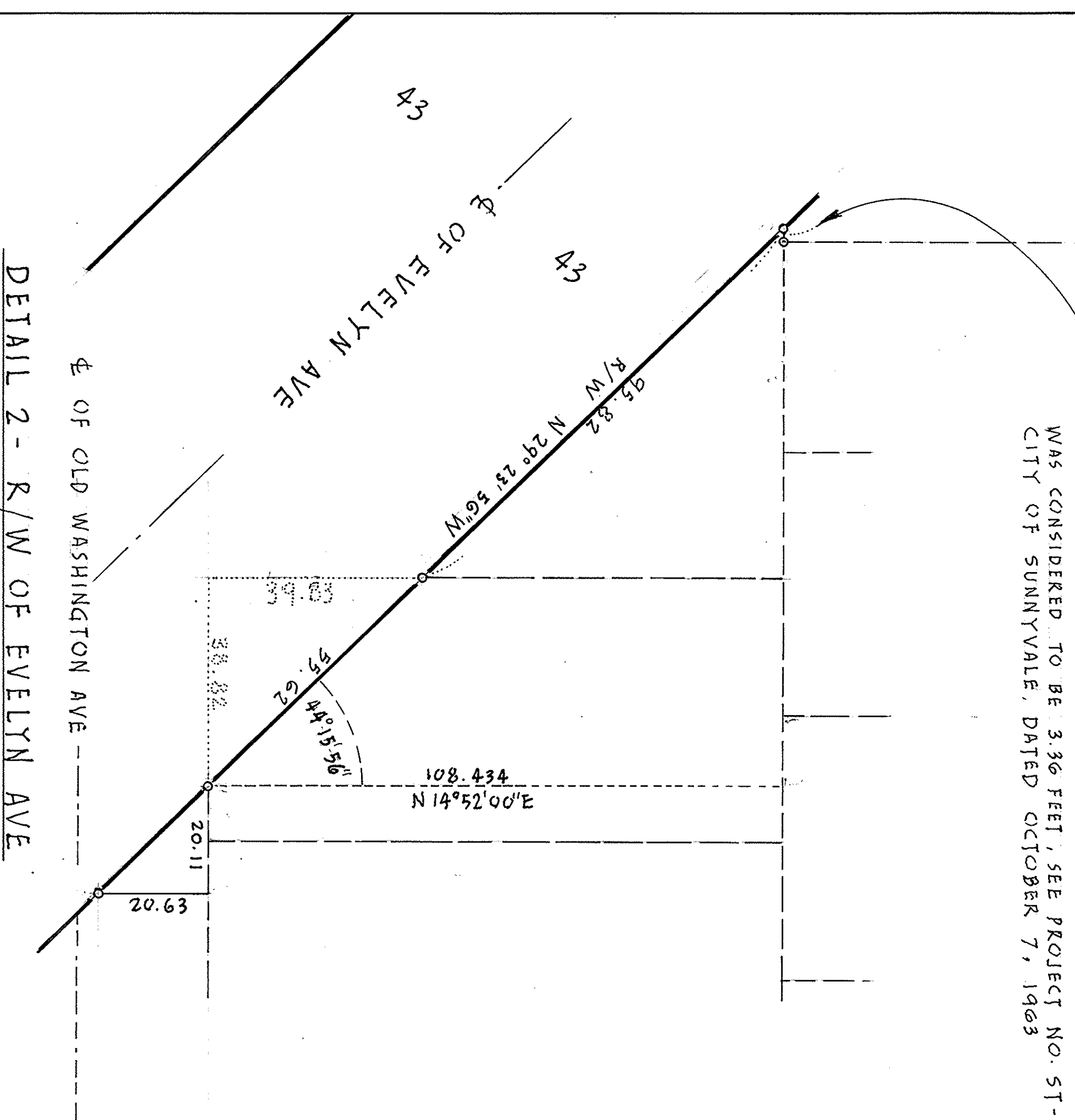


3.08 FEET AS COMPUTED BY DISTANCES RECORDED IN LARSON SUBD. NO. 2  
BOOK L OF MAPS AT PAGE 88 AND BOOK 204 PAGE 302  
WAS CONSIDERED TO BE 3.36 FEET, SEE PROJECT NO. ST-60-2  
CITY OF SUNNYVALE, DATED OCTOBER 7, 1963



PARCEL MAP  
FOR  
CALIFORNIA CANNERS & GROWERS

DAVID K. HO  
CIVIL ENGINEER  
1067 THE DALLES  
SUNNYVALE, CALIFORNIA

SCALE: 1" = 20'  
DATE: 4-4-75 JOB 750108 SHEET 4 OF 4

DETAIL 1 - N.W. CORNER OF INTERSECTION  
AT WASHINGTON AVE & FAIROAKS AVE

DETAIL 2 - R/W OF EVELYN AVE

Filed June 12, 1975 File No 5029457 Book 357 Pages 21, 22, 23 & 24