

CORNER RECORD

City of BERKELEY

Document Number

CR 3346

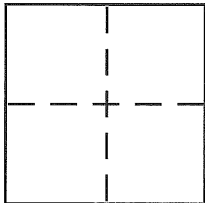
County of

ALAMEDA

California

Brief Legal Description

MONUMENT B0207 - CITY OF BERKELEY



CORNER TYPE

Government Corner ☐

Control ☐

Meander ☐

Property ☐

Rancho ☐

Other ☒

Date of Survey

4-02-08

COORDINATES (Optional)

N. _____

E. _____

Zone _____

NAD27 ☐ NAD83 ☐

NAD83 Epoch _____

Elev. _____

Vert. Datum: _____

NGVD29 ☐

NAVD88 ☐

Meas. Units: _____

Metric ☐

Imperial ☐

Corner -

Left as found ☒

Found and tagged ☐

Established ☐

Reestablished ☐

Rebuilt ☐

Identification and type of corner found: Evidence used to identify or procedure used to establish or reestablish the corner:

MONUMENT REFERENCE - SEE PAGE 2

A description of the physical condition of the monument as found and as set or reset: _____

SEE PAGE 2

SURVEYOR'S STATEMENT

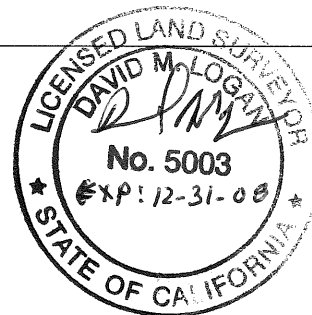
This Corner Record was prepared by me or under my direction in conformance with the Land Surveyor's Act on APRIL 2 2008

Signed

[Signature]

P.L.S or R.C.E. No.

PLS 5003



COUNTY SURVEYOR'S STATEMENT

This Corner Record was received _____

5-2-08

and examined and filed _____

5-27-08

Signed

[Signature]

P.L.S or R.C.E. No.

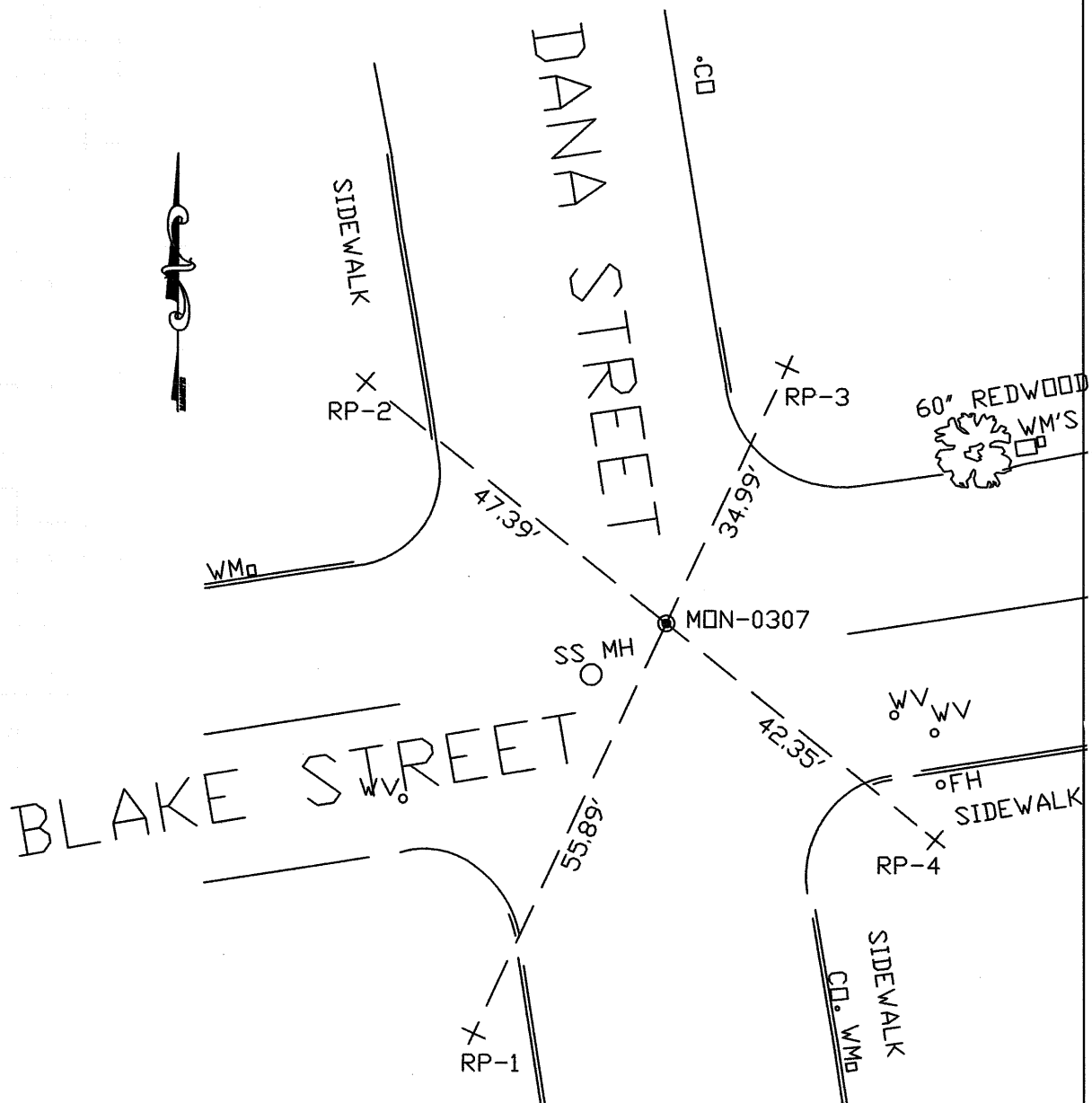
5726

Title

COUNTY SURVEYOR

County Surveyor's Comment _____





LEGEND

- STANDARD WELL-TYPE CITY MONUMENT WITH $\frac{1}{4}$ " PIN
- + REFERENCE CROSS ON SIDEWALK

NOTE:

THE EXISTING MONUMENT AS SHOWN IS REFERENCED BY STRAIGHT LINES BETWEEN RP-1 TO RP-3 AND RP-2 TO RP-4.