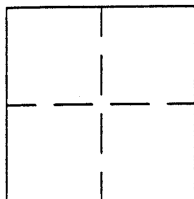


CORNER RECORDAPN No. 84B - 326 - 68 - 3 (Optional)Document Number C.R. 1648City of UnincorporatedCounty of ALAMEDA, CaliforniaBrief Legal Description Lot 27, Valley Crest Gardens 24/92 & Tract 3685**CORNER TYPE**

Government Corner ☐ Control ☐
 Meander ☐ Property ☒
 Rancho ☐ Other ☐
 Date of Survey Sept. 20, 2001

COORDINATES
(Optional)

N. _____
 E. _____
 Zone _____ Datum _____
 Elev. _____

Corner - Left as found ☐ Found and tagged ☐ Established ☒ Reestablished ☐ Rebuilt ☐

In compliance with Section 8771 of the Professional Land Surveyors' Act, this corner record is being filed to
 ESTABLISH ____ / REESTABLISH ____ the position of an existing monument PRIOR ____ / SUBSEQUENT ____
 to street or highway reconstruction. (Use this portion only when applicable.)

Identification and type of corner found: Evidence used to identify or procedure used to establish or reestablish the corner:

See Map

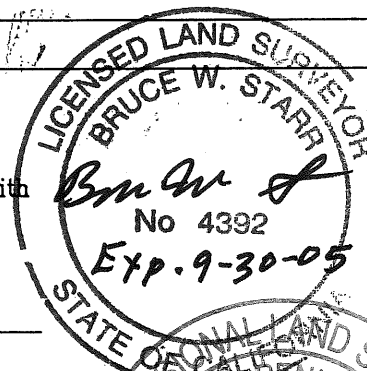
A description of the physical condition of the monument as found and as set or reset: _____

See Map**SURVEYOR'S STATEMENT**

This Corner Record was prepared by me or under my direction in conformance with

the Land Surveyors' Act on Oct. 10 2001.

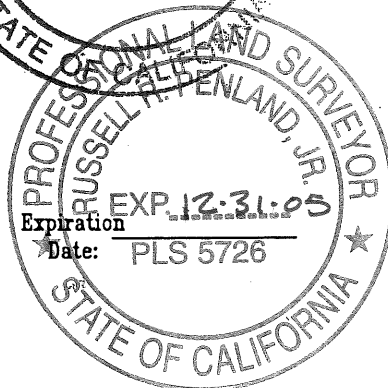
Signed Bruce W. Starr L.S. or R.C.E. Number 4392

**COUNTY SURVEYOR'S STATEMENT**

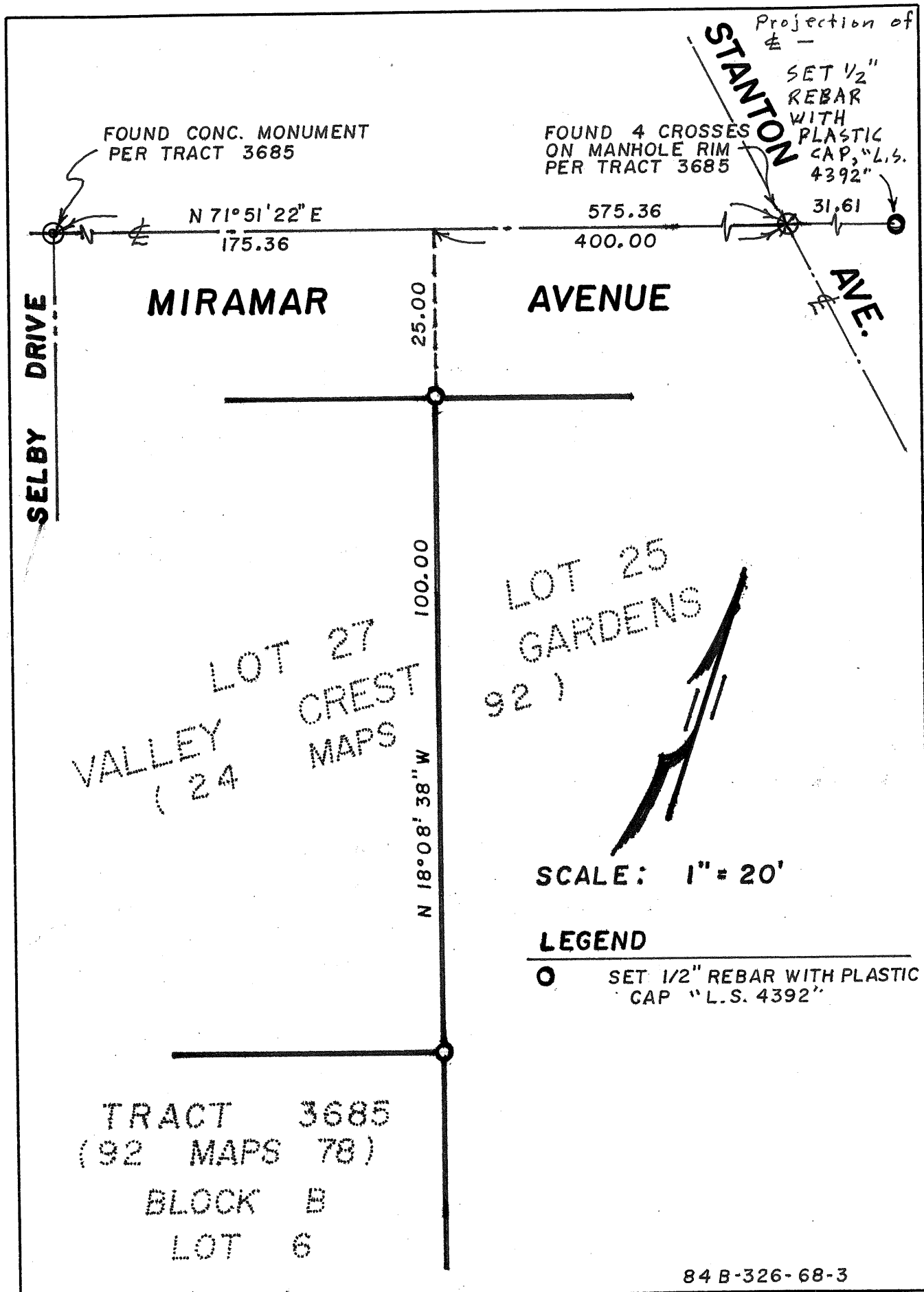
This Corner Record was received 2.22.2002 and examined

and filed 12.18.2003.

Signed Russell R. Penland, Jr. Title Deputy County Surveyor



County Surveyor's Comment _____



84 B-326-68-3