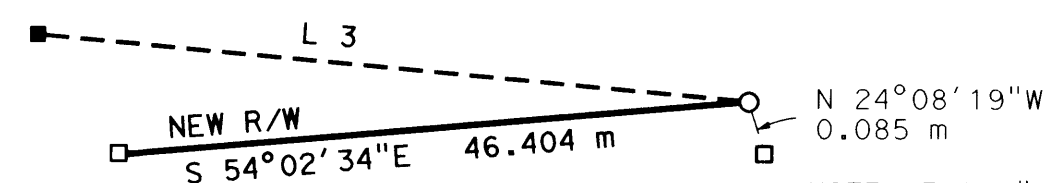
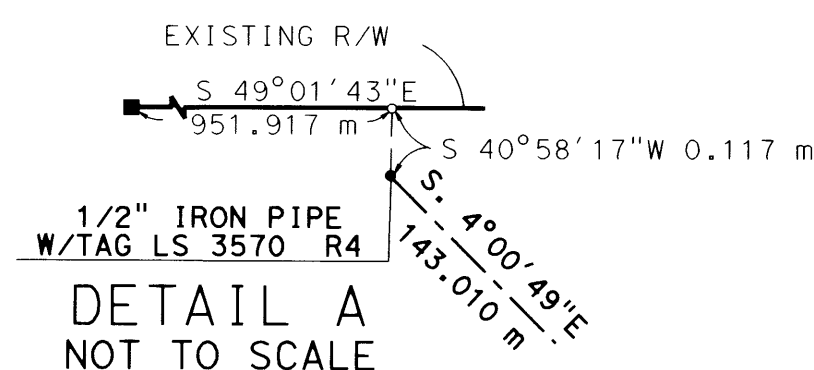


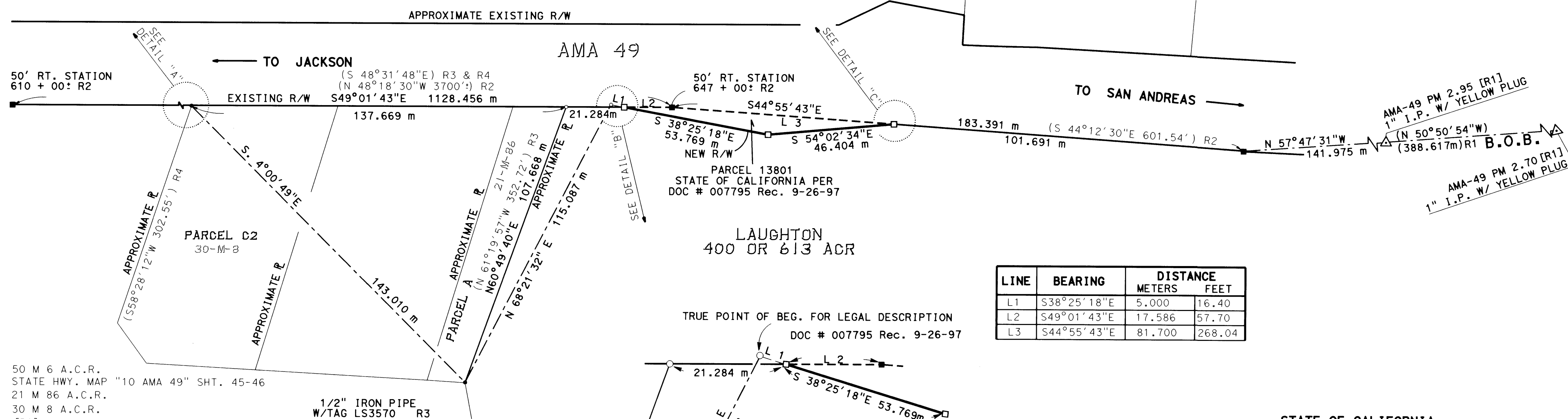
T. 6 N., R. 11 E., M.D.M. SECTION 27



DIST	COUNTY	ROUTE	POST MILES TOTAL PROJECT	SHEET NO.	TOTAL SHEETS
10	AMA	49	3.1	2	2



DETAIL C
NOT TO SCALE



- [R1] 50 M 6 A.C.R.
[R2] STATE HWY. MAP "10 AMA 49" SHT. 45-46
[R3] 21 M 86 A.C.R.
[R4] 30 M 8 A.C.R.
NOTE: [R2] IS ON FILE AT CALTRANS DISTRICT 10
1976 E. CHARTER WAY, STOCKTON CA

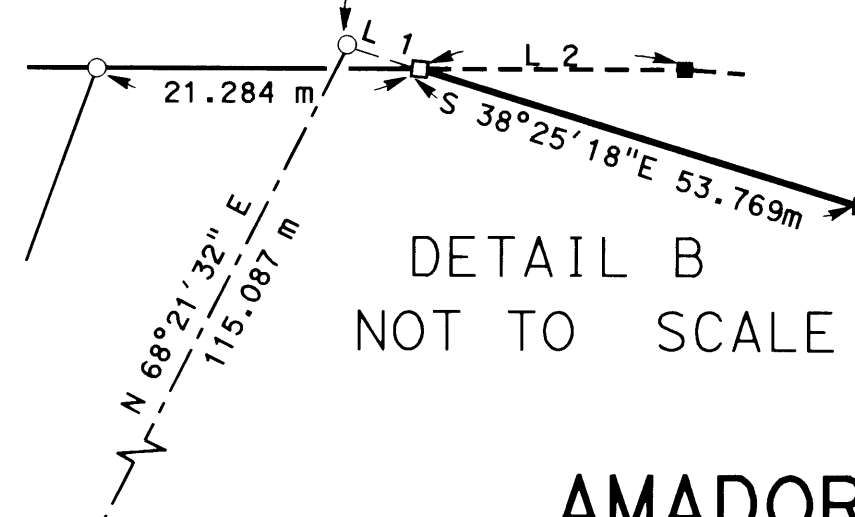
LEGEND

- FOUND 6" X 6" CHC MOUNUMENT
- FOUND 1" IRON PIPE W/ YELLOW PLUG
PER UNRECORDED CALTRANS SURVEY
IN DECEMBER 1997
- FOUND MONUMENT AS DESCRIBED
- CALCULATED POINT
- CHC CALIFORNIA HIGHWAY COMMISSION
- A.C.R. AMADOR COUNTY RECORDS
- M MAPS AND PLATS
- () RECORD
- m METERS

THE DISTANCES AND BEARINGS SHOWN
ON THIS SURVEY ARE ON THE
CALIFORNIA COORDINATE SYSTEM, NAD 83, ZONE 2.
TO CONVERT TO GROUND DISTANCE USE
A SCALE FACTOR (1/CGF) OF 1.0000539.
TO CONVERT METERS TO FEET,
MULTIPLY BY 3937/1200.

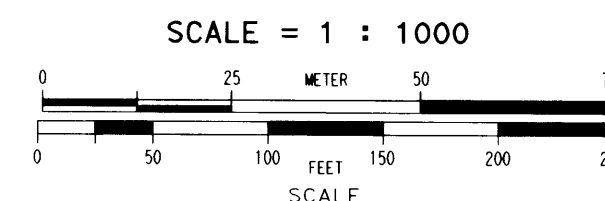
LINE	BEARING	DISTANCE METERS	FEET
L1	S38°25'18"E	5.000	16.40
L2	S49°01'43"E	17.586	57.70
L3	S44°55'43"E	81.700	268.04

TRUE POINT OF BEG. FOR LEGAL DESCRIPTION
DOC # 007795 Rec. 9-26-97



DETAIL B
NOT TO SCALE

AMADOR COUNTY



STATE OF CALIFORNIA
BUSINESS AND TRANSPORTATION AGENCY
DEPARTMENT OF TRANSPORTATION
DISTRICT 10, STOCKTON
RECORD OF SURVEY

SHOWING MONUMENTS FOUND IN THE SOUTHWEST QUARTER OF
SECTION 27, TOWNSHIP 6 NORTH, RANGE 11 EAST, M.D.M.
in the CITY OF JACKSON
AMADOR COUNTY, CALIFORNIA

DATE: APRIL 2003