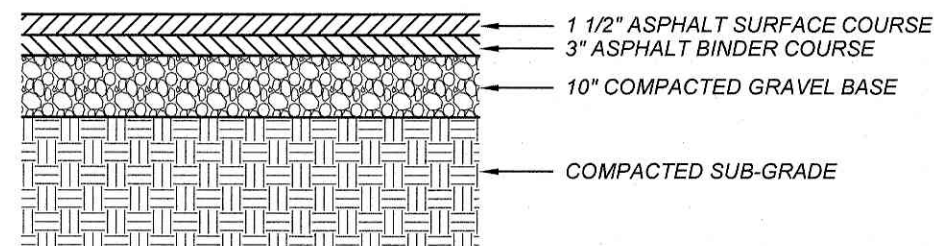
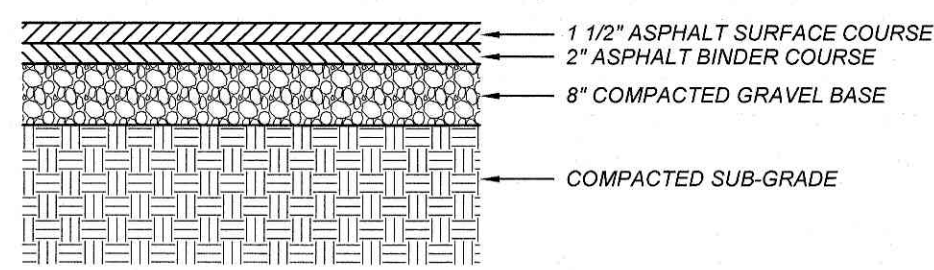


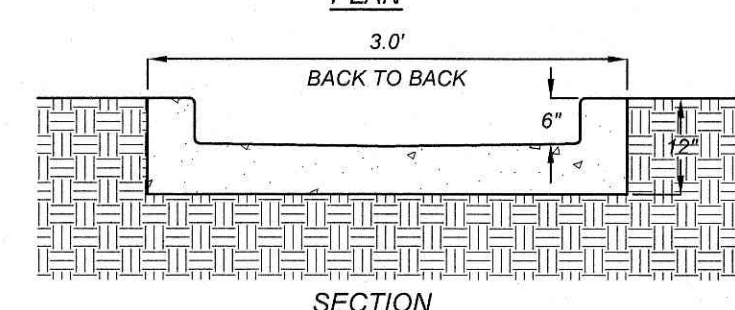
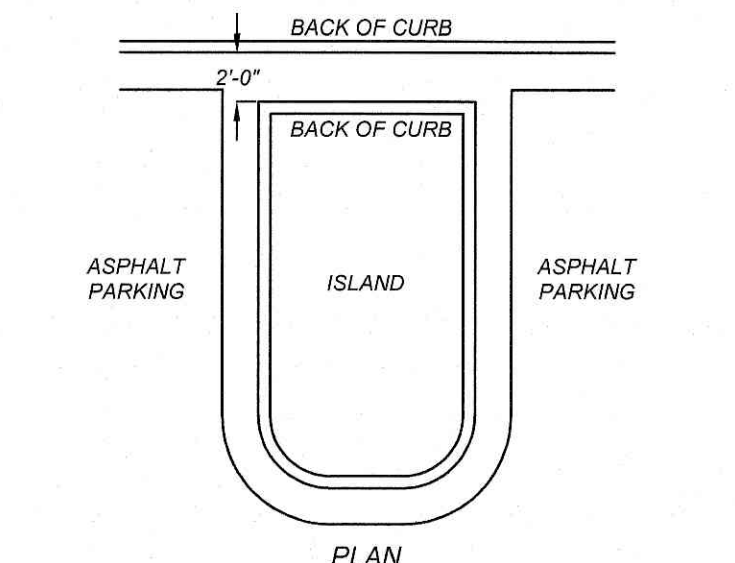
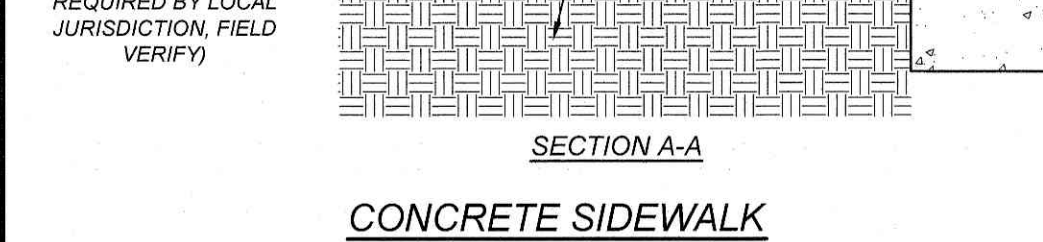
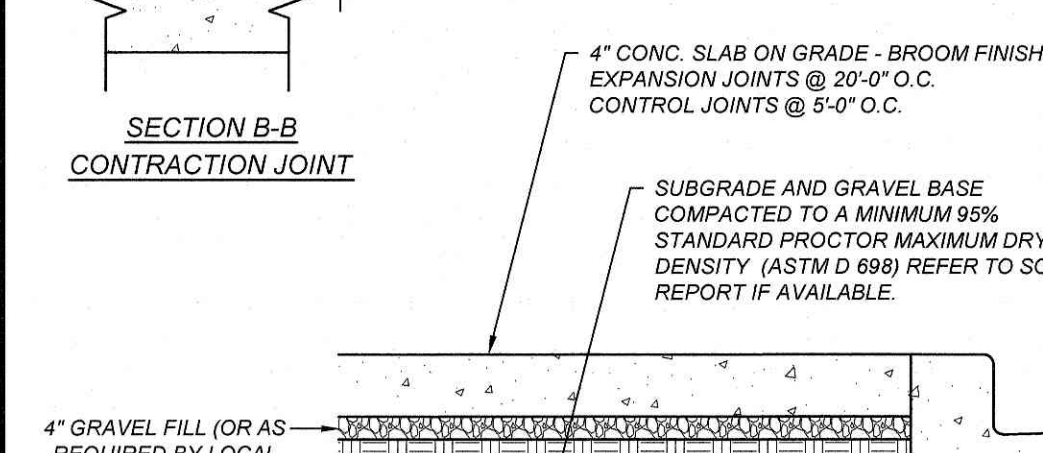
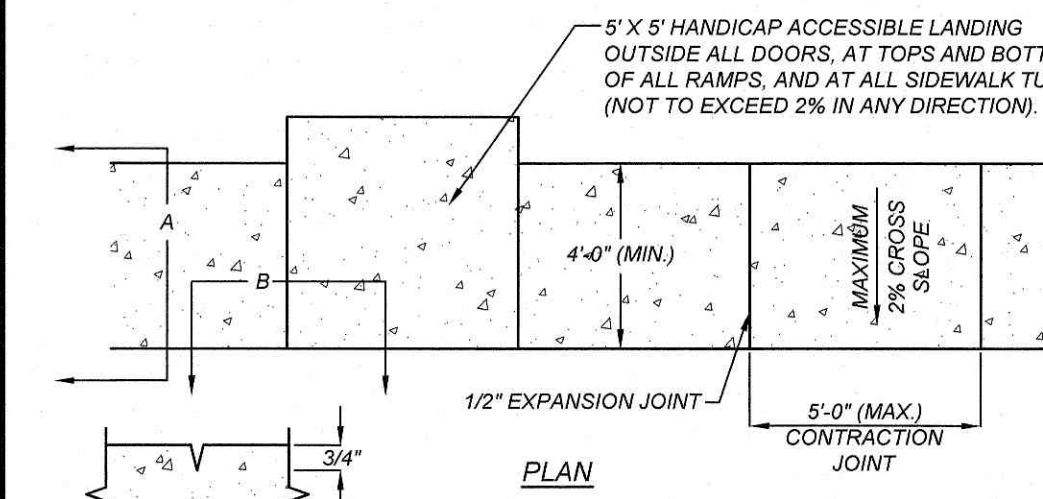
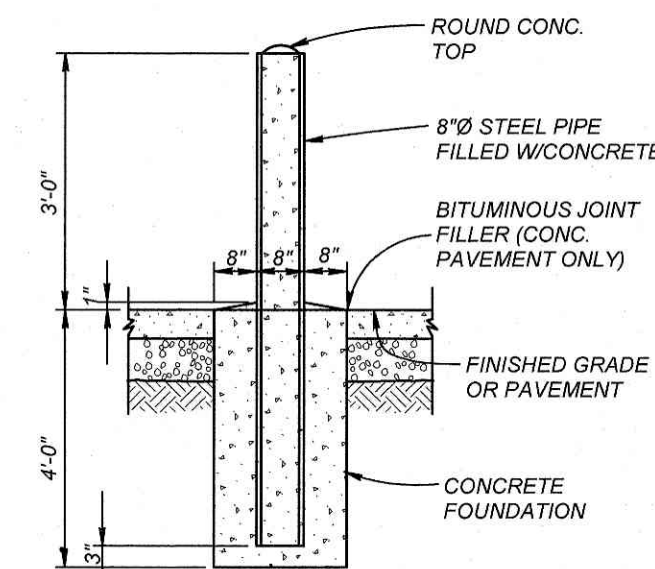
- NOTES:
1. SCORE CURB / VALLEY GUTTER AT 15' O.C.
 2. PROVIDE 1/2" EXPANSION JOINTS AT 90' O.C.
 3. CONTRACTION JOINTS SHALL BE SPACED AT 10' INTERVALS. (A 15' SPACING WILL BE ALLOWED WHEN A MACHINE IS USED.)
 4. FINISH ALL CONCRETE WITH CURING COMPOUND.

2'-0" STANDARD CURB AND GUTTER

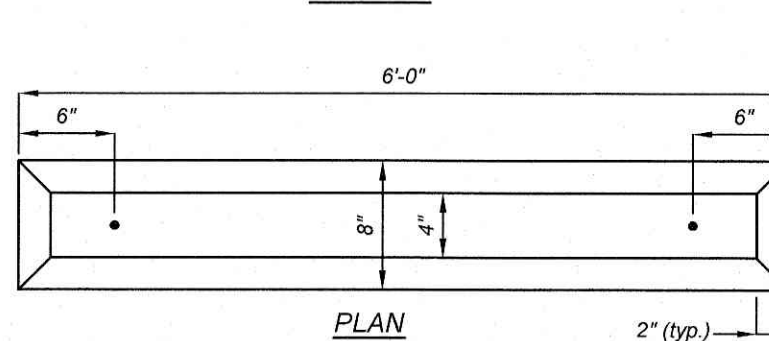
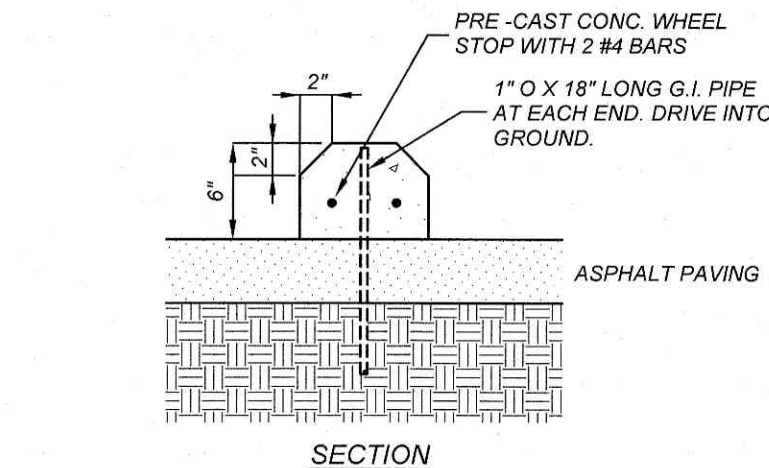


- NOTES:
1. CONTRACTOR SHALL OBTAIN SOILS REPORT, IF AVAILABLE, AND ADJUST PAVEMENT SECTIONS ACCORDINGLY.
 2. CONTRACTOR SHALL PLACE BINDER COURSE DURING CONSTRUCTION, THEN PLACE SURFACE COURSE AFTER BUILDING AND SITE CONSTRUCTION.
 3. SUBGRADE COMPACTED TO A MINIMUM 95% STANDARD PROCTOR MAXIMUM DRY DENSITY (ASTM D 698) REFER TO SOILS REPORT IN NOTE ABOVE.

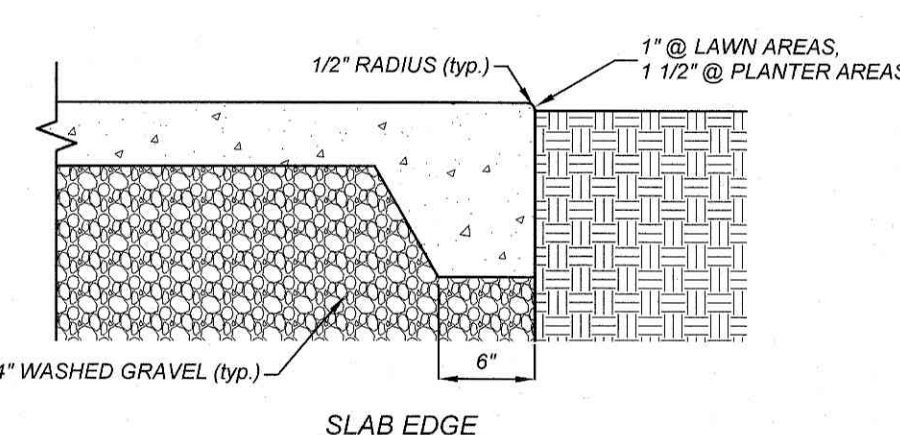
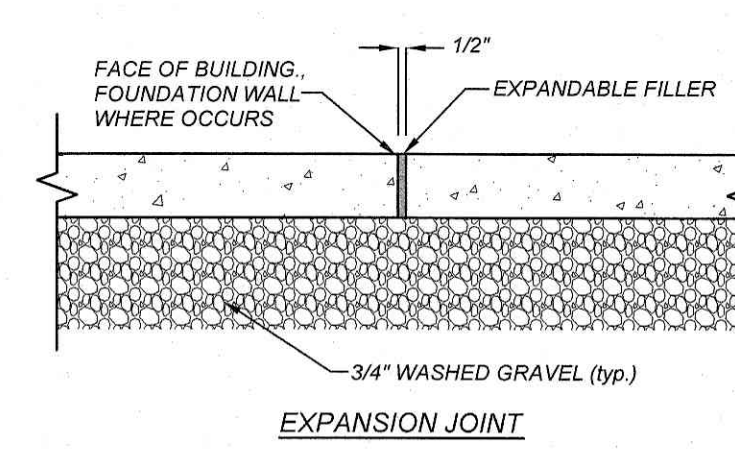
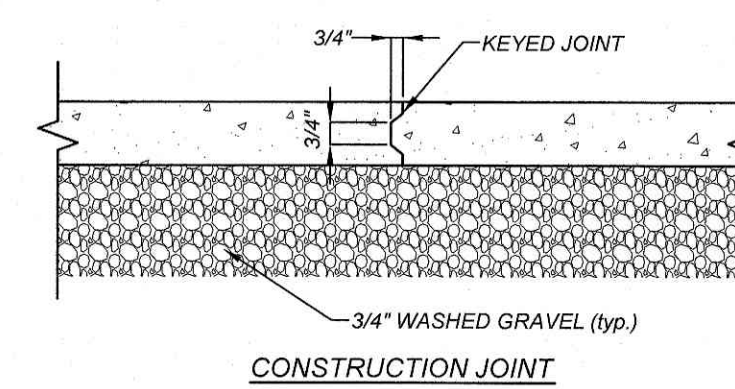
ASPHALT PAVEMENT DETAIL



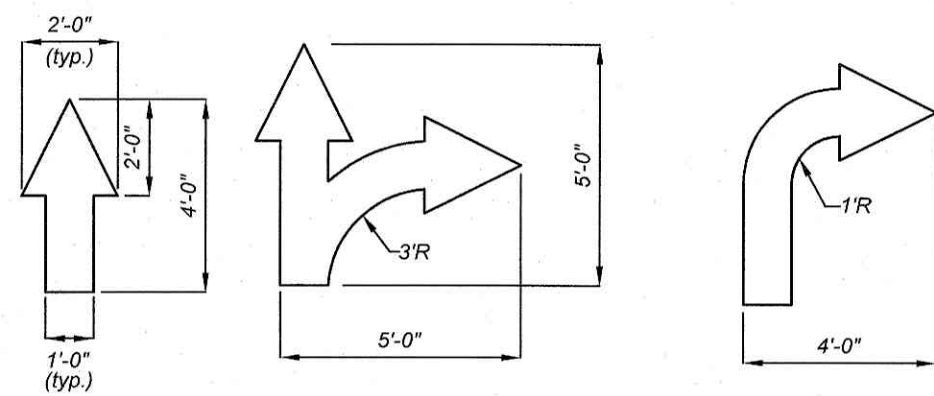
CONCRETE FLUME



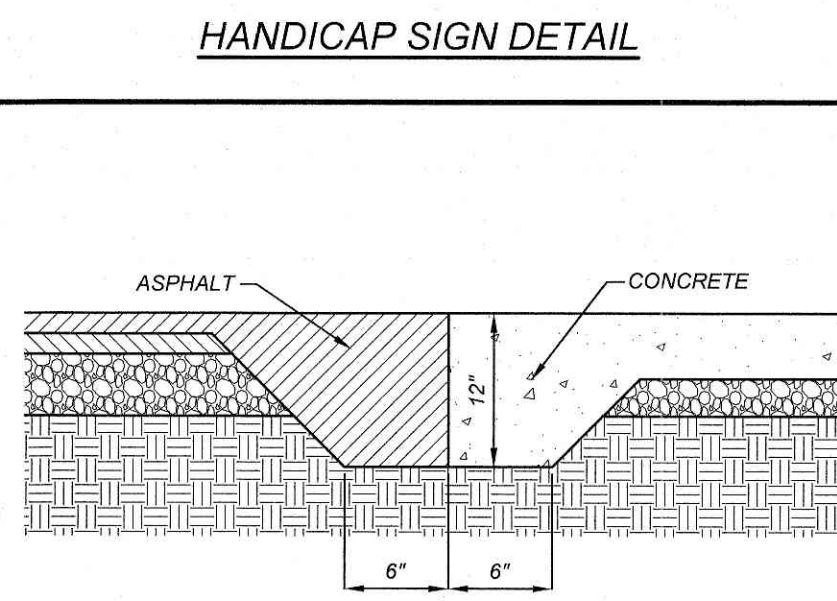
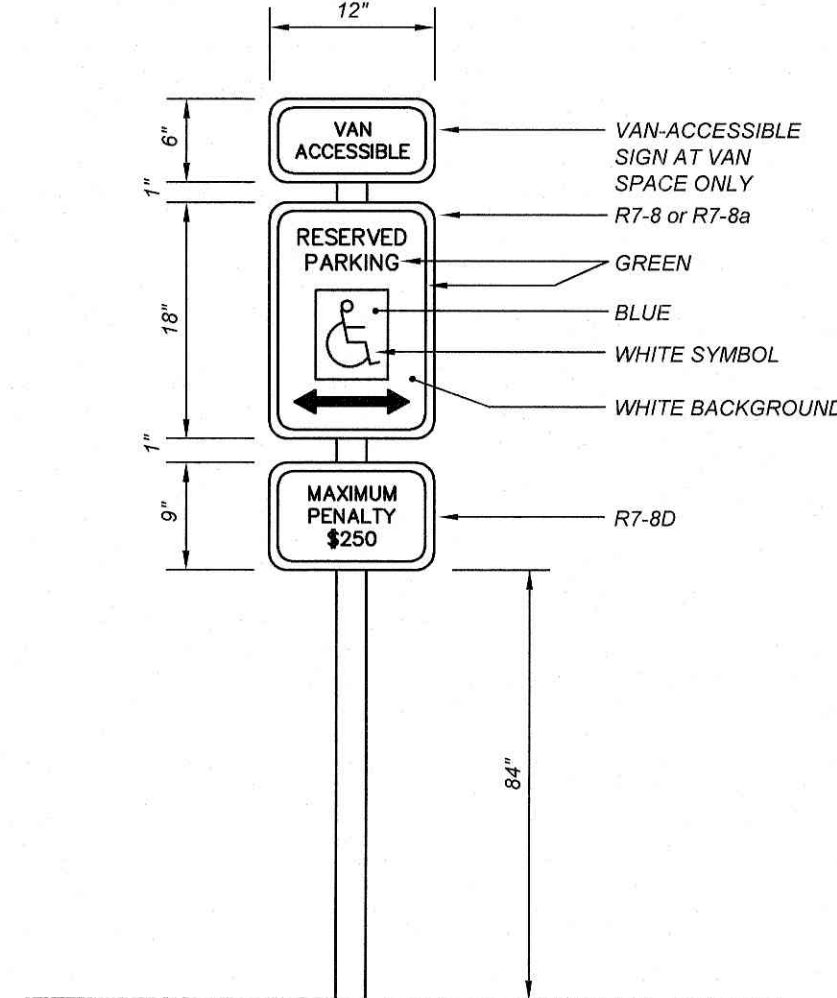
CONCRETE WHEEL STOP



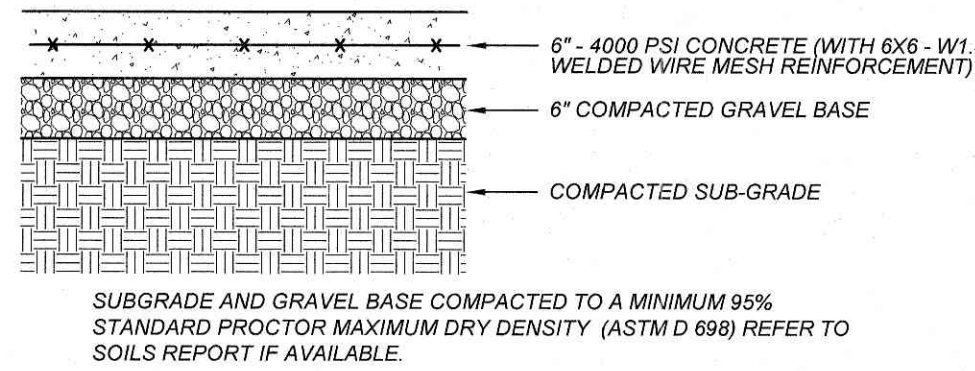
CONCRETE SLAB DETAIL



TRAFFIC ARROWS

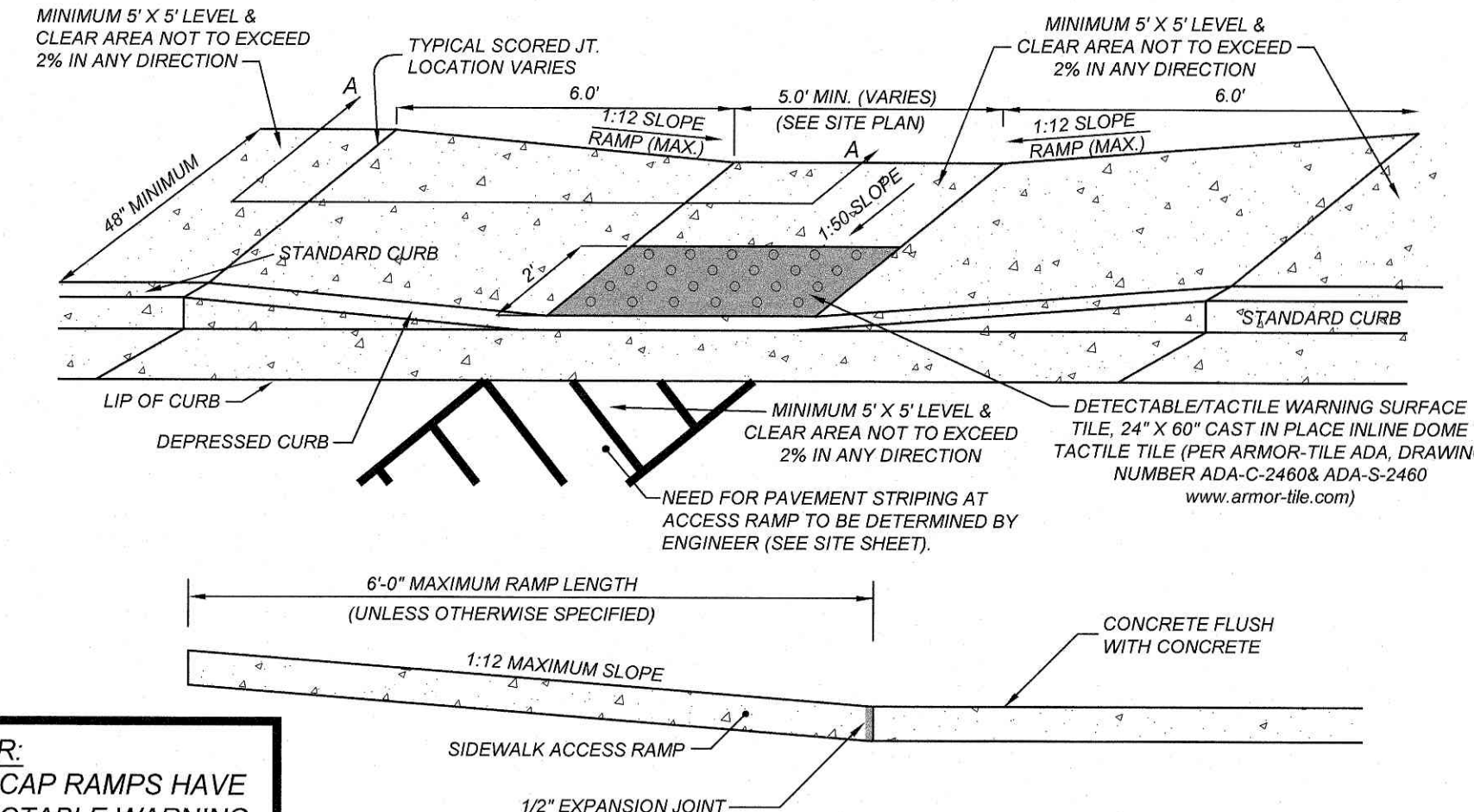
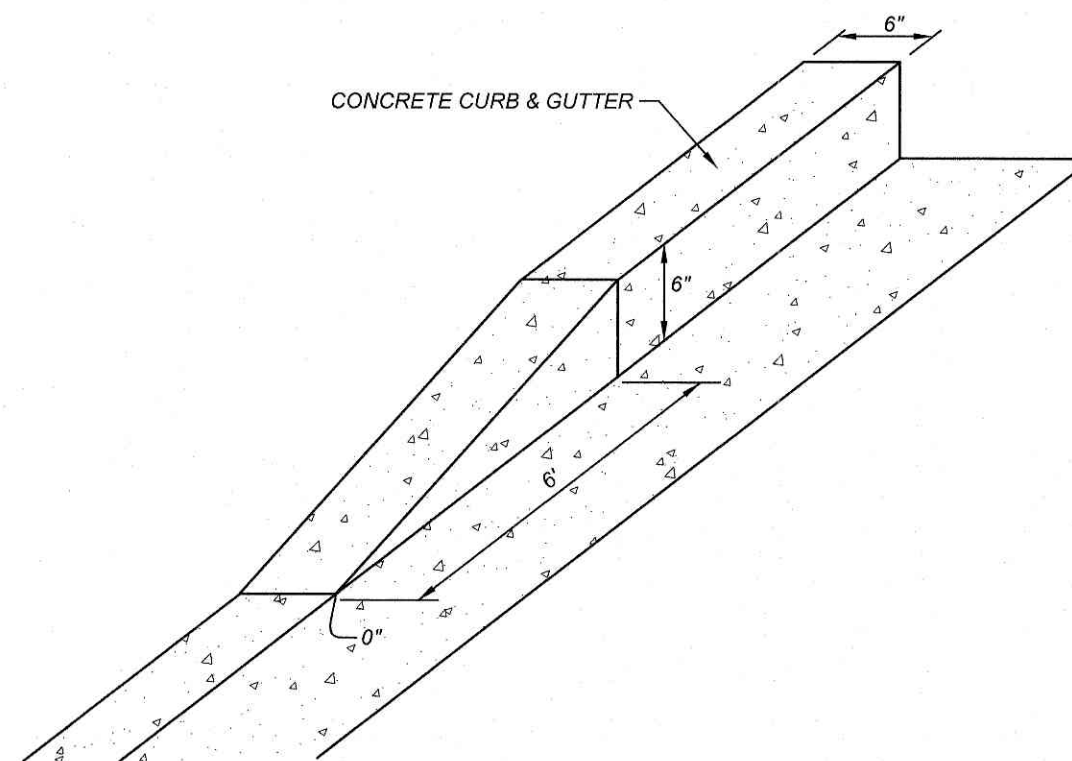


ASPHALT/CONCRETE TRANSITION

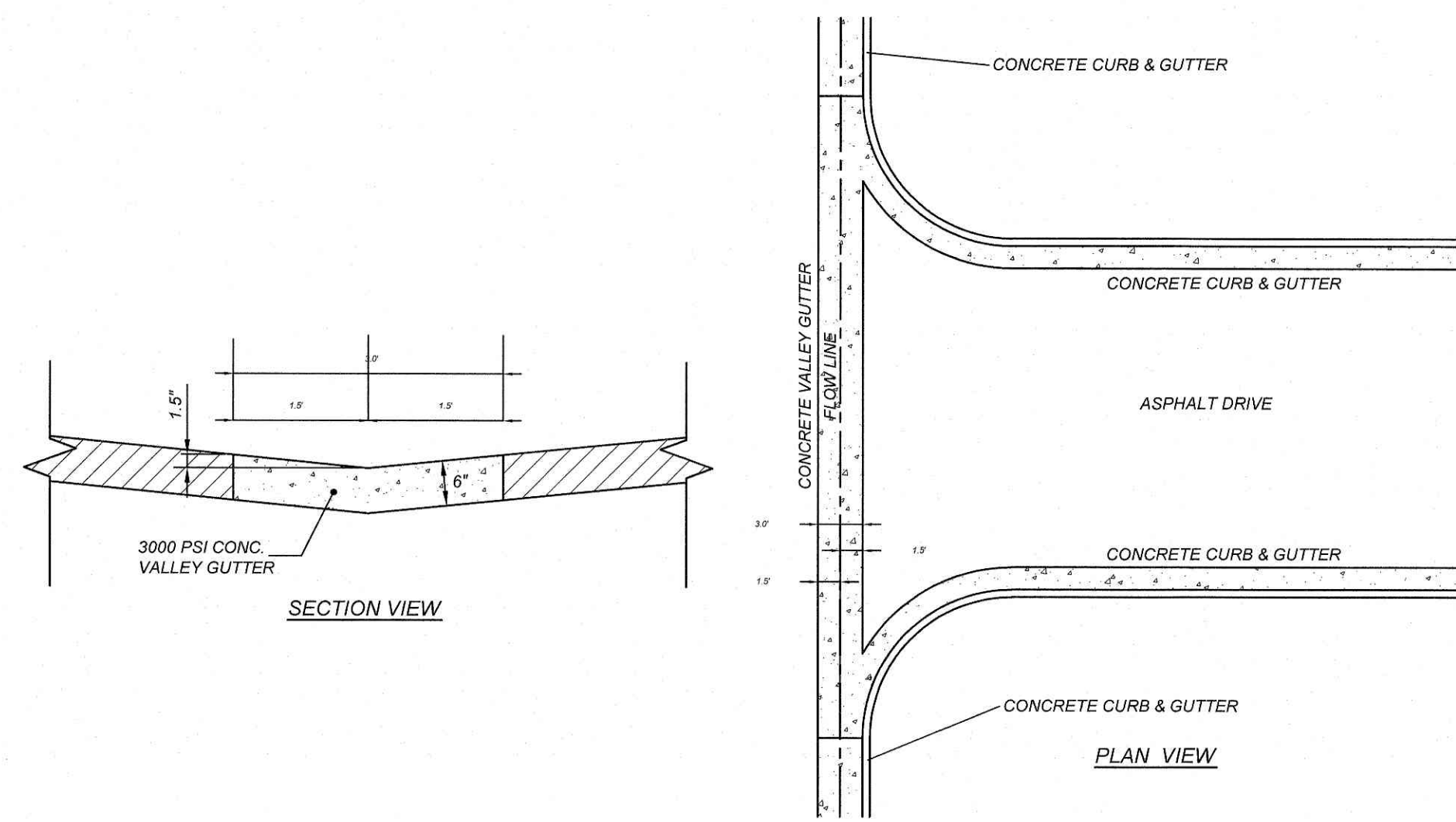


- NOTES:
1. CONTRACTOR SHALL OBTAIN SOILS REPORT IF AVAILABLE, AND ADJUST PAVEMENT SECTIONS ACCORDINGLY.

CONCRETE PAVEMENT DETAIL



NOTE TO CONTRACTOR:
ALL PROPOSED HANDICAP RAMPS HAVE
ADA COMPLIANT DETECTABLE WARNING
SURFACES, WHICH MUST BE THE FULL
LENGTH OF THE RAMP LANDING



TYPICAL CONCRETE VALLEY GUTTER

(N.T.S.)

REVISIONS	NO.	DATE	DESCRIPTION	BY

COMMERCIAL SITE DESIGN

882 CREEDMOOR ROAD
RALEIGH, NORTH CAROLINA 27603

PHONE: (919) 848-0121
WWW.CSDESIGN.COM

CLIENT:

TRACK WEST PARTNERS
445 BISHOP ST NW
ATLANTA, GA 30318
PHONE: (404) 913-9131
Matt@trackwestpartners.com

thwy 55

1424 CURTIS BRIDGE ROAD
WILKESBORO, NORTH CAROLINA 28697

PROJECT NO. TRW-2003
FILENAME: TRW2003-DTL1
DRAWN BY: DDH
SCALE: N.T.S.
DATE: 09-21-2021
SHEET NO. C-9

