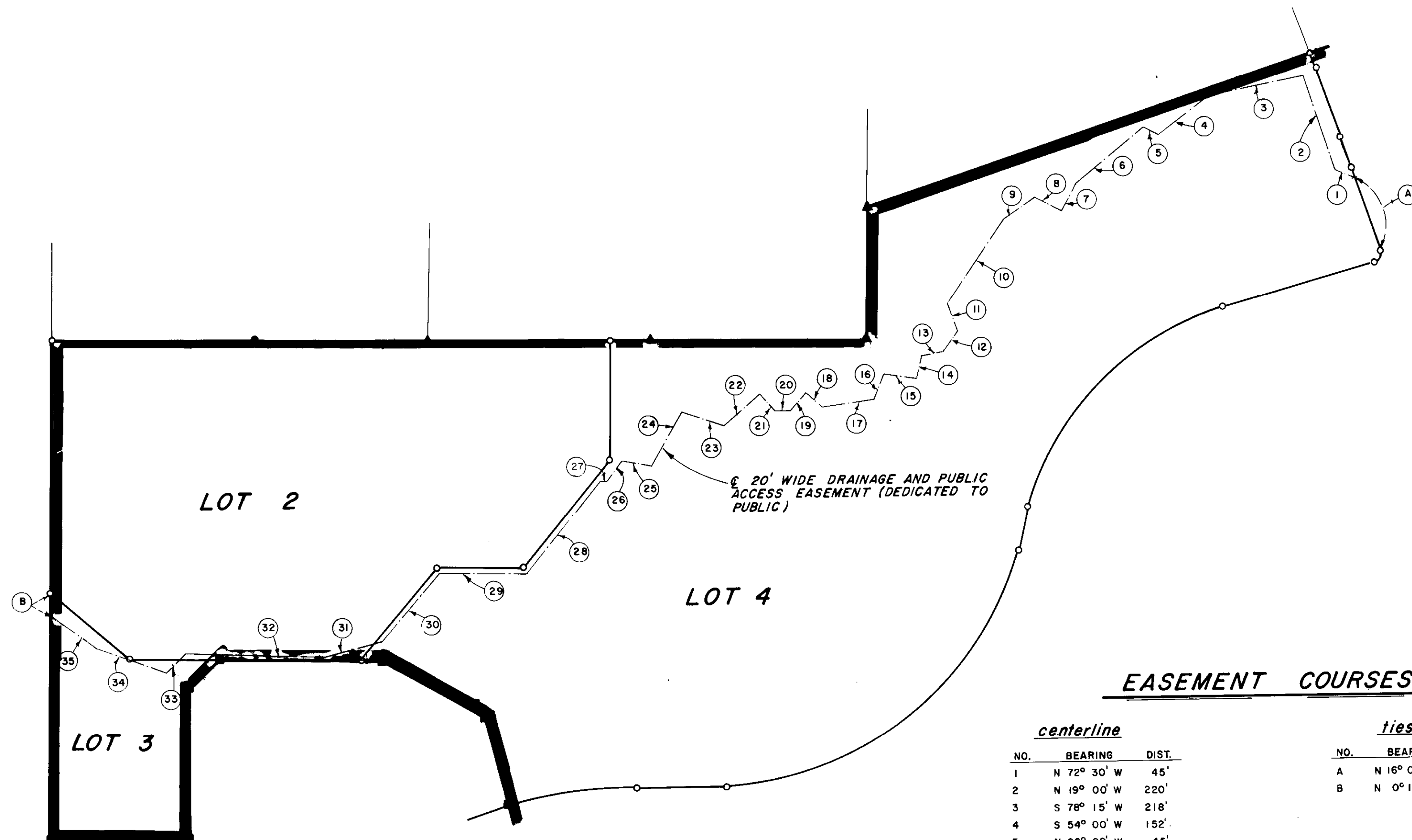


# TRACT NO. 36-134

IN THE UNINCORPORATED TERRITORY OF MONO COUNTY, CALIFORNIA

BEING A RESUBDIVISION OF A PORTION OF SECTIONS 2,3,10 TOWNSHIP 4 SOUTH,  
RANGE 27 EAST, M.D.B. & M. DESCRIBED IN DEED RECORDED IN BOOK 245  
PAGES 83-88 OF OFFICIAL RECORDS OF SAID COUNTY.



**NOTE**  
For boundary line information and description  
of monuments, see sheet 4.

## EASEMENT COURSES

centerline		
NO.	BEARING	DIST.
1	N 72° 30' W	45'
2	N 19° 00' W	220'
3	S 78° 15' W	218'
4	S 54° 00' W	152'
5	N 66° 00' W	45'
6	S 51° 15' W	205'
7	S 24° 00' W	72'
8	N 57° 00' W	70'
9	S 57° 30' W	100'
10	S 35° 00' W	230'
11	S 21° 00' E	75'
12	S 30° 00' W	58'
13	S 85° 15' W	52'
14	S 16° 00' W	58'
15	N 83° 00' W	68'
16	S 22° 30' W	60'
17	S 80° 30' W	122'
18	N 46° 30' W	55'
19	S 46° 30' W	58'
20	S 87° 00' W	32'
21	N 42° 00' W	60'
22	S 44° 30' W	115'
23	N 69° 00' W	103'
24	S 31° 30' W	150'
25	N 80° 30' W	70'
26	S 38° 15' W	55'
27	N 82° 30' W	14.84'

ties		
NO.	BEARING	DIST.
A	N 16° 06' 17" W	180.00'
B	N 0° 12' 47" E	54.60'
28	S 38° 25' 58" W	263.16'
29	N 87° 34' 02" W	207.26'
30	S 31° 55' 44" W	195.00'
31	S 76° 30' 00" W	147.00'
32	N 88° 17' 07" W	313.00'
33	S 48° 30' 00" W	65.00'
34	N 70° 00' 00" W	158.00'
35	N 51° 30' 00" W	156.10'