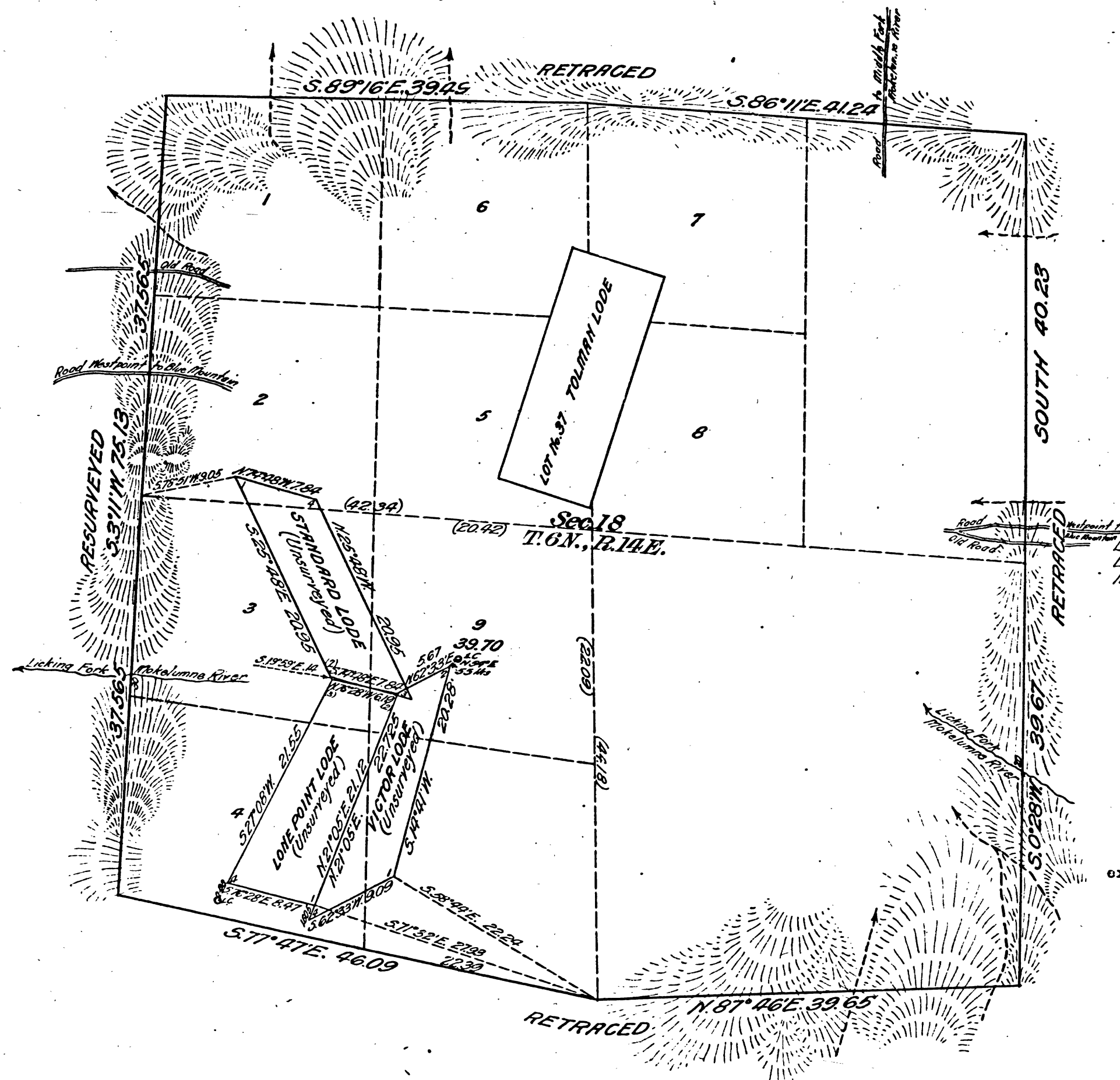


*Map*  
*showing the segregation of the*  
*Lone Point, Victor and Standard Lodes*  
*from the N.E. 1/4, S.W. 1/4 Sec. 18, T. 6 N., R. 14 E., M.D.M.,*

*Group No. 72, California.*

*Scale, 1 inch = 10 chains*



Lines of Section 18 previously surveyed  
exhibited on plat approved March 25, 1874.

Surveys Designated	Amount of Surveys mcs. chs. fcs.
Cuts of sec. res. et al.	4 01 50
Bdks. of claims	1 71 55.5
Connections	59 36

The above map, showing the segregation of the Lone Point, Victor and Standard Lodes, unsurveyed, from the N. E. 1/4 S. W. 1/4 Sec. 18, T. 6 N., R. 14 E., M. D. M., as surveyed by Guy Redwine, U. S. Cadastral Engineer, June 29 to July 7, 1919, under Special Instructions dated February 24th, 1919, to accommodate the homestead entry of Joseph L. Haley, is strictly conformable to the field notes of the survey thereof on file in this office, which have been examined and approved.

U. S. Surveyor General's Office,  
San Francisco, California,  
February 11, 1920.

41 533

*Louis H. Moore*  
U. S. Surveyor General for California.