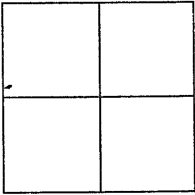


CORNER RECORDDocument Number CR 5577City of OAKLANDCounty of ALAMEDA, CaliforniaBrief Legal Description IRON PIN MONUMENT LOCATED WITHIN GRIZZLY PEAK BOULEVARD.
(1NE19 BM)**CORNER RECORD**

Government Corner ☐ Control ☒
 Meander ☐ Property ☐
 Rancho ☐ Other ☐
 Date of Survey 4/18/13

COORDINATES
(Optional)

N. 2148686 ±1'
 E. 6059709 ±1'
 Zone _____ Datum _____
 Elev. _____

Corner — Left as found ☒ Found and tagged ☐ Established ☐ Reestablished ☐ Rebuilt ☐

Identification and type of corner found: Evidence used to identify or procedure used to establish or reestablish the corner:
FOUND IRON PIN MONUMENT LOCATED WITHIN GRIZZLY PEAK BOULEVARD APPROXIMATELY
0.720 MILES SOUTHERLY FROM THE INTERSECTION OF GOLF COURSE ROAD.
AS SHOWN ON CITY OF OAKLAND MONUMENT MAP, PAGE 359.

THIS POINT WAS REFERENCED PRIOR TO A CONSTRUCTION PROJECT IN THE VICINITY.

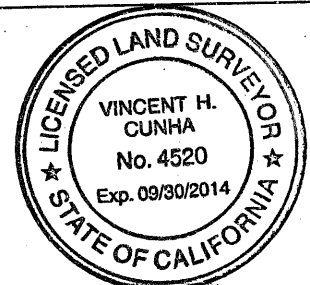
A description of the physical condition of the monument as found and as set or reset:
FOUND AND SET POINTS AS SHOWN ON PAGE 2.

THESE TIES ARE FOR THE PURPOSE OF PERPETUATING THE FOUND MONUMENTATION.

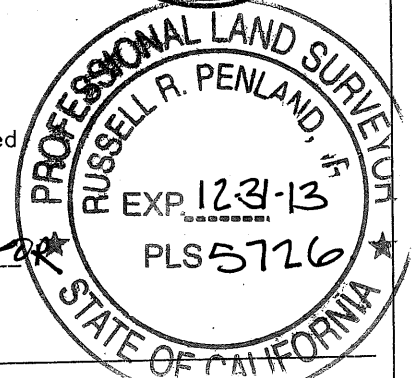
NO CLAIM IS MADE AS TO THE RELATIONSHIP OF THE POINTS OR LINES SHOWN HEREON
TO TRUE BOUNDARY LOCATIONS.

SURVEYOR'S STATEMENT

This Corner Record was prepared by me or under my direction in conformance with
 the Land Surveyors' Act on MAY 1, 20 13.
 Signed Vincent H. Cunha L.S. Number LS 4520
VINCENT H. CUNHA

**COUNTY SURVEYOR'S STATEMENT**

This Corner Record was received 5-30-13 and examined
 and filed 8-23-2013
 Signed Russell R. Penland Title County Surveyor



County Surveyor's Comment _____

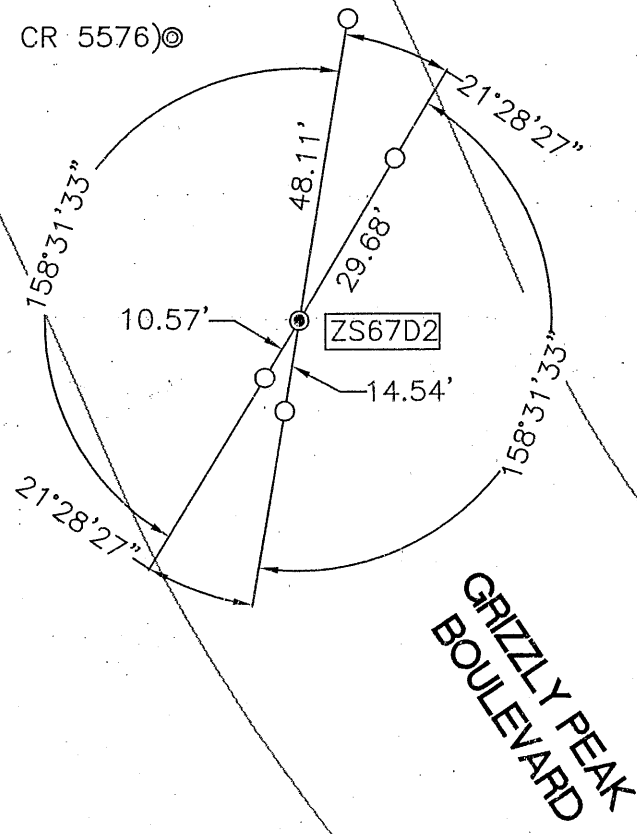
CONTRA COSTA COUNTY
CITY OF OAKLAND

LEGEND

- FOUND IRON PIN IN MONUMENT WELL (1NE19 BM)
- ⊙ FOUND MONUMENT AS NOTED
- SET 1/2" REBAR & BLANK CAP
- AA##A# ALAMEDA COUNTY MONUMENT ID

SCALE: 1"=30'

(SEE: CR 5576)⊙



GRIZZLY PEAK
BOULEVARD