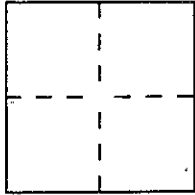


CORNER RECORD

Document Number 606City of OAKLANDCounty of ALAMEDA, CaliforniaBrief Legal Description PARCEL B, P.M. 5168, 174 PM 69

CORNER TYPE

Government Corner ☐ Control ☐
 Meander ☐ Property ☒
 Rancho ☐ Other ☐
 Date of Survey 10-14-91

COORDINATES
(Optional)

N. _____
 E. _____
 Zone _____ Datum _____
 Elev. _____

Corner — Left as found ☐ Found and tagged ☐ Established ☒ Reestablished ☐ Rebuilt ☐

Identification and type of corner found: Evidence used to identify or procedure used to establish or reestablish the corner:

FOUND POINTS AS SHOWN ON REVERSE.

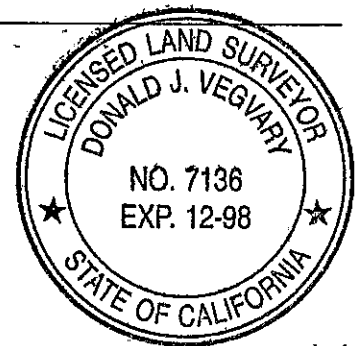
A description of the physical condition of the monument as found and as set or reset:

SET POINTS AS SHOWN ON REVERSE.

SURVEYOR'S STATEMENT

This Corner Record was prepared by me or under my direction in conformance with the Land Surveyors' Act on 1-19 1996.

Signed [Signature] L.S. or R.C.E. Number L.S. 7136



COUNTY SURVEYOR'S STATEMENT

This Corner Record was received 60-21 1995 and examined and filed 60-20 1997

Signed [Signature] Title Deputy County Surveyor

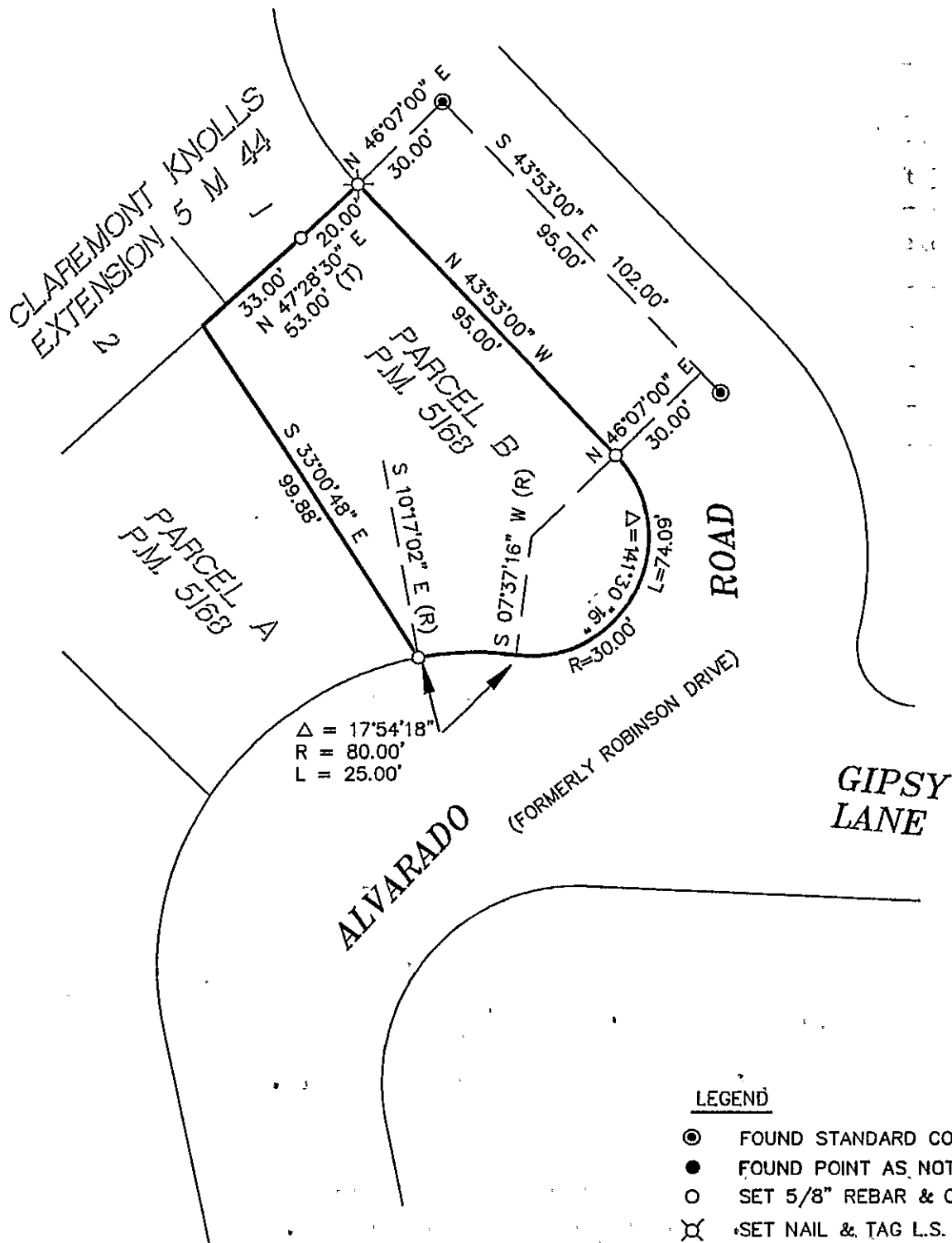


County Surveyor's Comment THE SURVEYOR WHO SIGNED AND SEALED THIS CORNER RECORD WAS DIFFERENT FROM THE SURVEYOR WHOSE CAPS WERE SET ON THE SURVEY MONUMENTS IN THE FIELD. SEE 8761 OF PROFESSIONAL LAND SURVEYORS' ACT.

CORNER RECORD

PARCEL B - PARCEL MAP 5168

174 P.M. 69



IVAN VEGVARY & ASSOCIATES
CIVIL ENGINEER - LAND SURVEYOR
40 TERRA TERESA
LAFAYETTE, CA 94549
(510) 947-1051