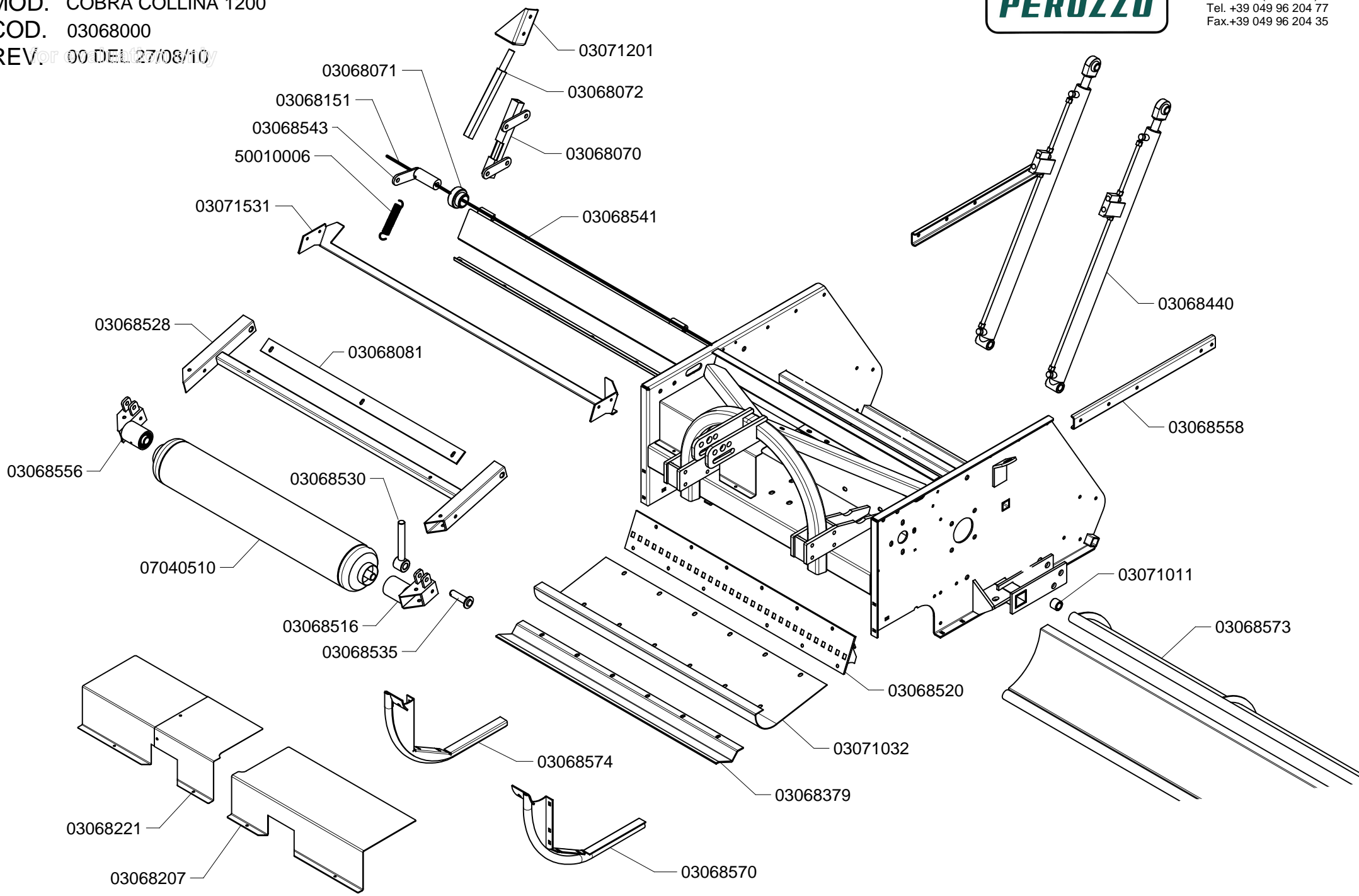




MOD. COBRA COLLINA 1200  
COD. 03068000  
REV. 00 DEL 27/08/10



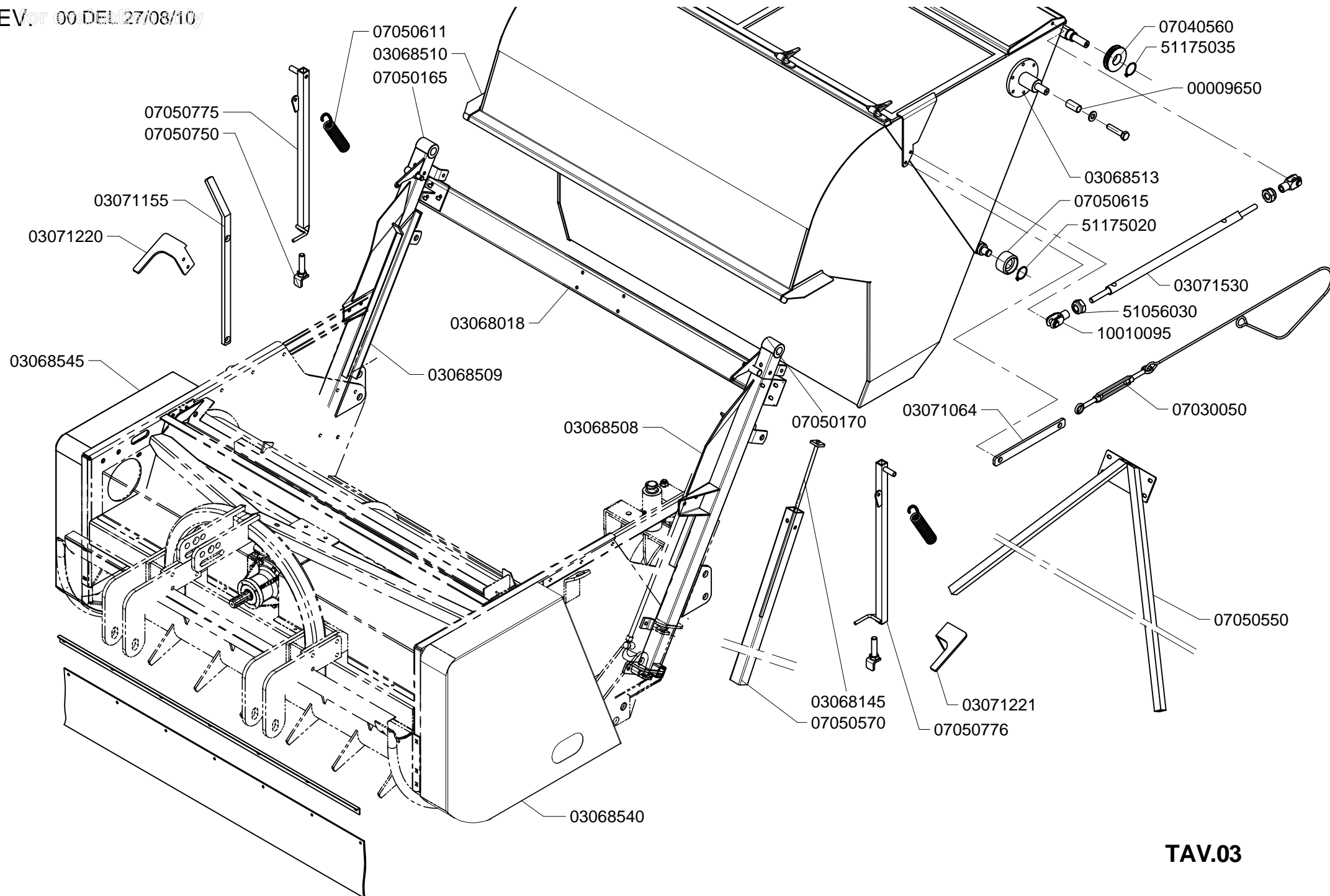
Via Valsugana 30  
35010 Curtarolo (PADOVA) - ITALY  
Tel. +39 049 96 204 77  
Fax. +39 049 96 204 35



REV. 00 DEL 27/08/10



Via Valsugana 30  
35010 Curtarolo (PADOVA) - ITALY  
Tel. +39 049 96 204 77  
Fax.+39 049 96 204 35

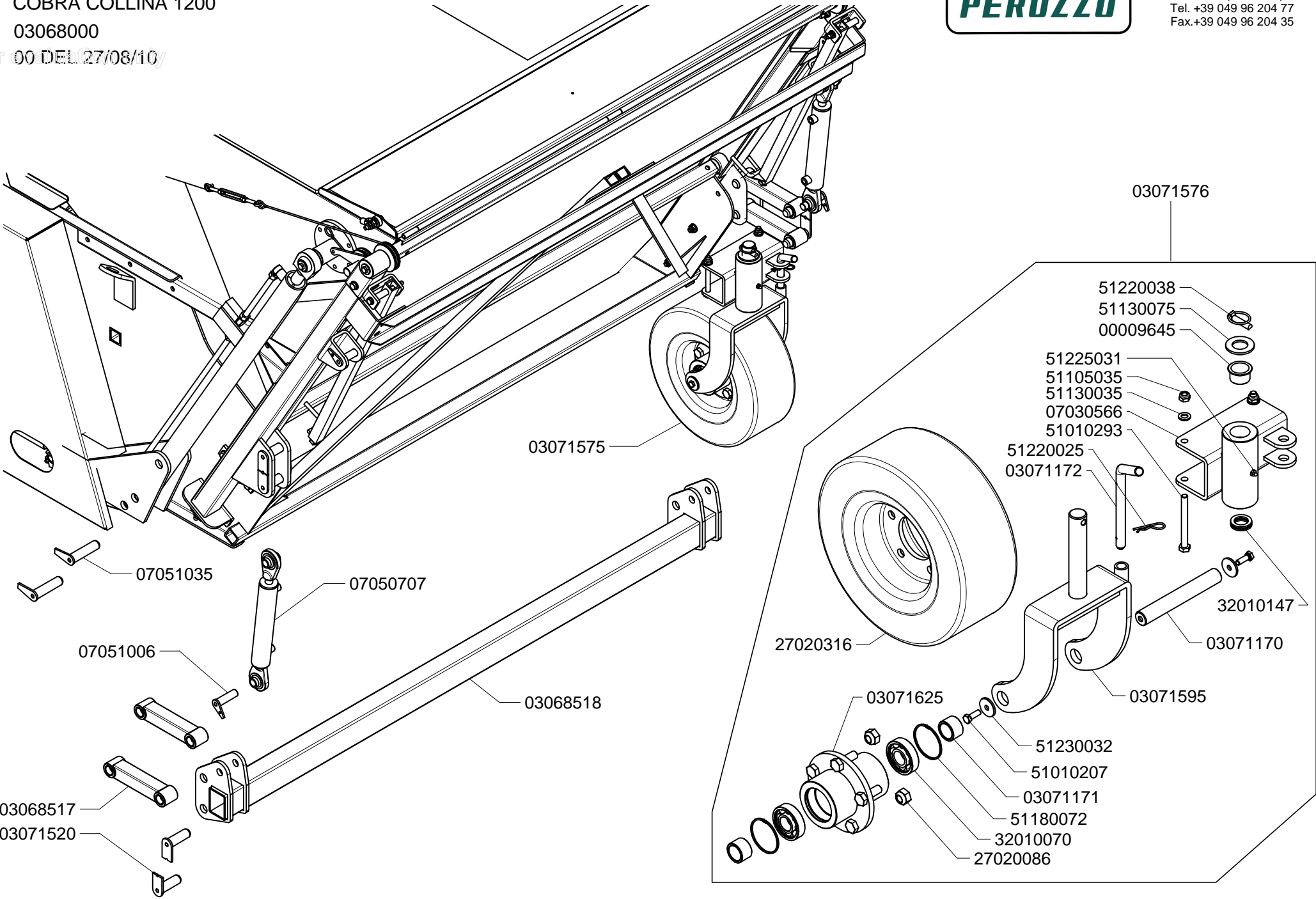


**TAV.03**

MOD. COBRA COLLINA 1200  
COD. 03068000  
REV. 00 DEL 27/08/10



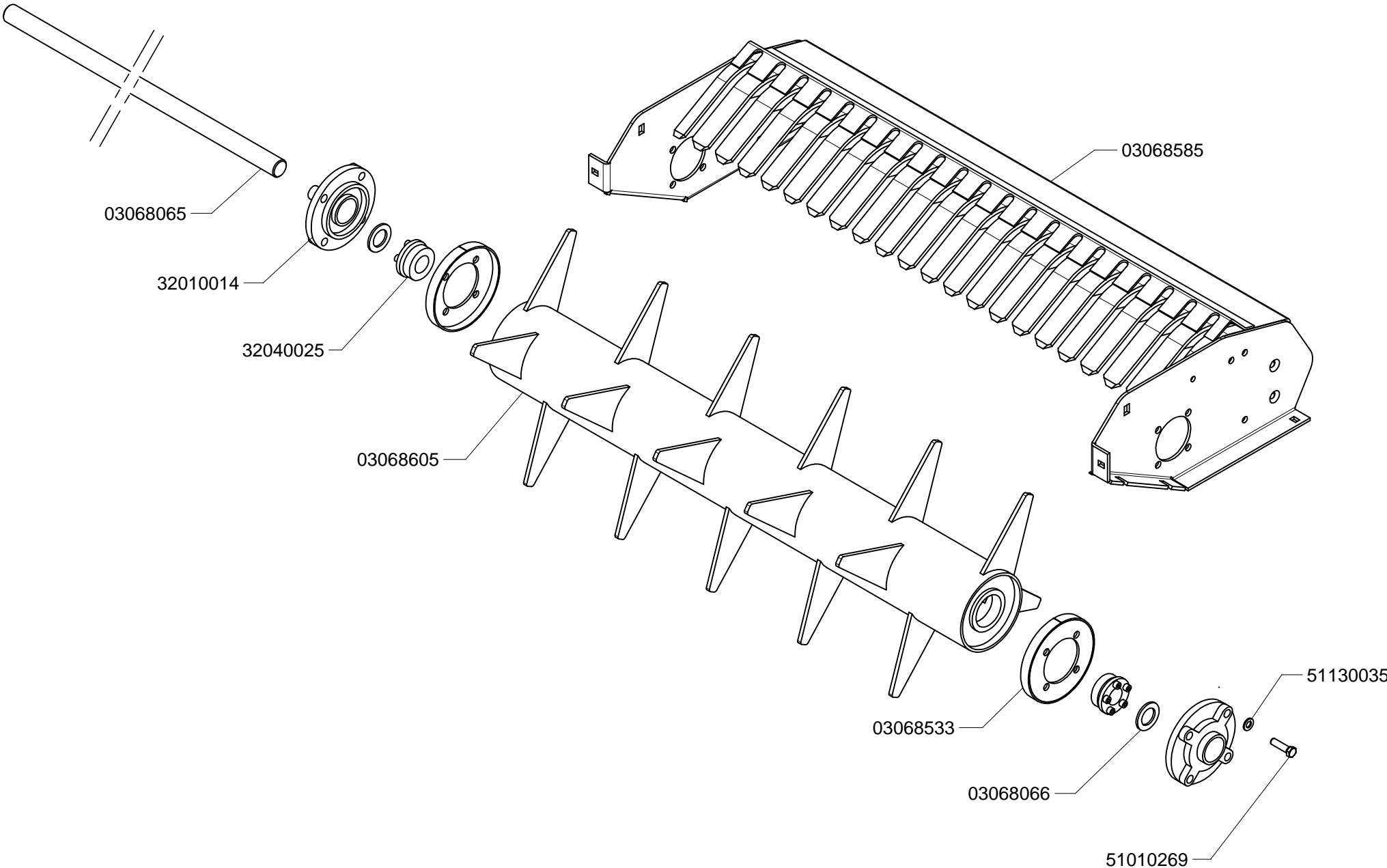
Via Valsugana 30  
35010 Curtarolo (PADOVA) - ITALY  
Tel. +39 049 96 204 77  
Fax.+39 049 96 204 35



MOD. COBRA COLLINA 1200  
COD. 03068000  
REV. 00 DEL 27/08/10



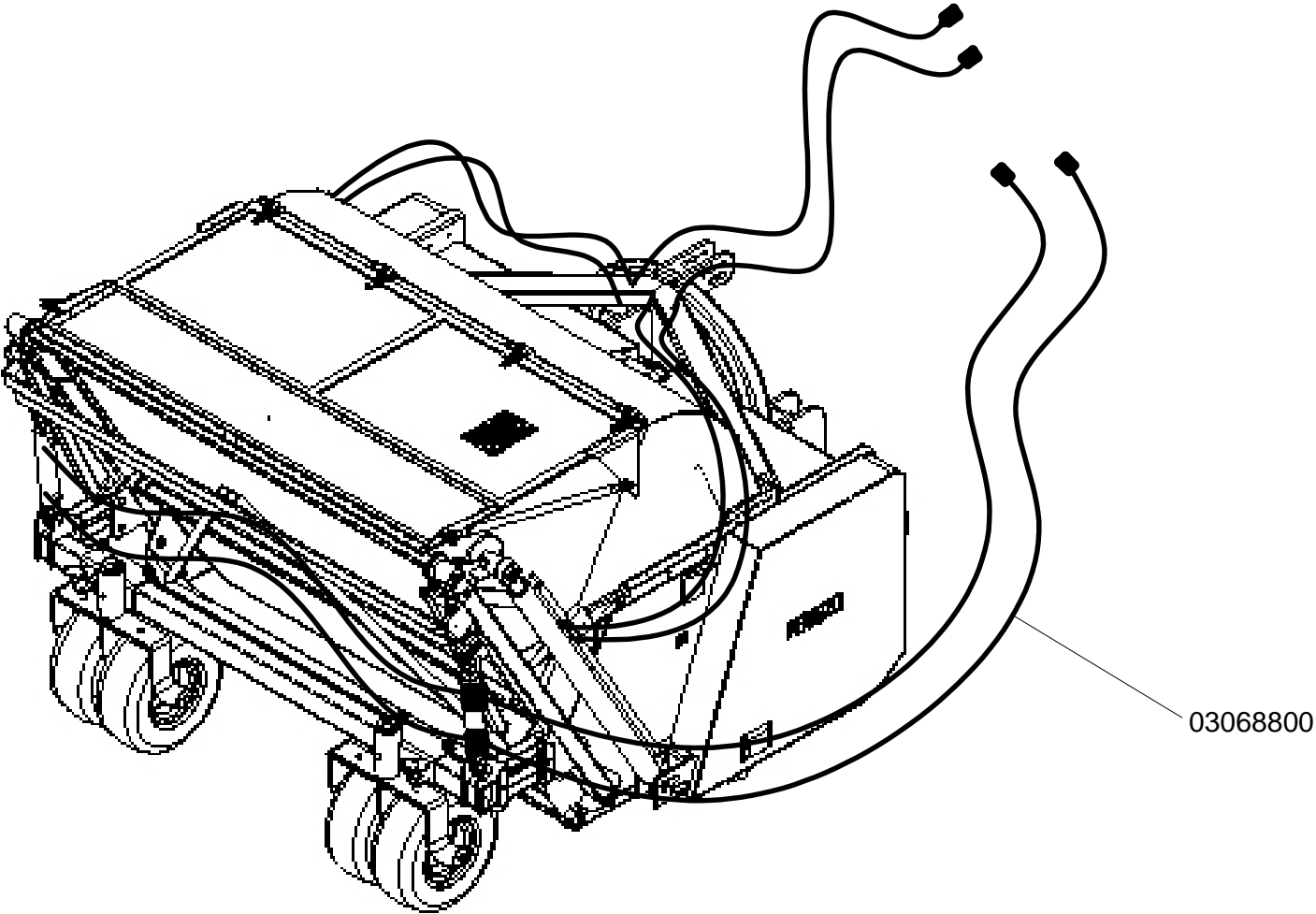
Via Valsugana 30  
35010 Curtarolo (PADOVA) - ITALY  
Tel. +39 049 96 204 77  
Fax.+39 049 96 204 35



MOD. COBRA COLLINA 1200  
COD. 03068000  
REV. 00 DEL 27/08/10



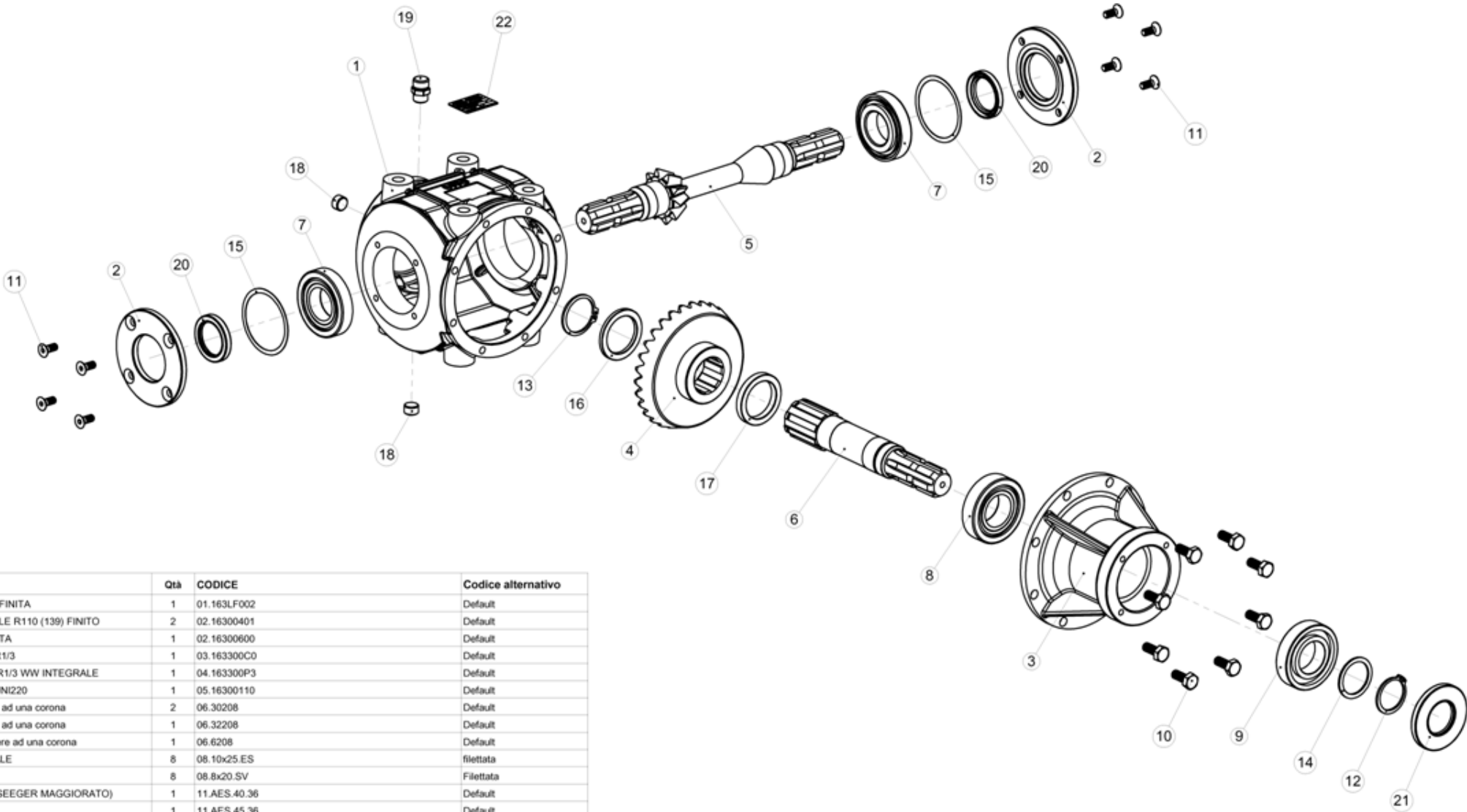
Via Valsugana 30  
35010 Curtarolo (PADOVA) - ITALY  
Tel. +39 049 96 204 77  
Fax. +39 049 96 204 35



MOD. COBRA COLLINA 1200  
COD. 03068000  
REV. 00 DEL 27/08/10



Via Valsugana 30  
35010 Curtarolo (PADOVA) - ITALY  
Tel. +39 049 96 204 77  
Fax.+39 049 96 204 35



ID	DESCRIZIONE	Qtà	CODICE	Codice alternativo
1	SCATOLA R110 (139) FINITA	1	01.163LF002	Default
2	COPERCHIO LATERALE R110 (139) FINITO	2	02.16300401	Default
3	TORRETTA R110 FINITA	1	02.16300600	Default
4	CORONA Z30 M5.15 R1/3	1	03.163300C0	Default
5	PIGNONE Z10 M5.15 R1/3 WW INTEGRALE	1	04.163300P3	Default
6	ALBERO W B 42X46 UNI220	1	05.16300110	Default
7	Cuscinetto a rulli conici ad una corona	2	06.30208	Default
8	Cuscinetto a rulli conici ad una corona	1	06.32208	Default
9	Cuscinetto radiale a sfere ad una corona	1	06.6208	Default
10	VITE 10*25 ESAGONALE	8	08.10x25.ES	filettata
11	VITE 8x20 SVASATA	8	08.8x20.SV	Filettata
12	Anello UNI 7436 - 40 (SEEGER MAGGIORATO)	1	11.AES.40.36	Default
13	Anello UNI 7436 - 45	1	11.AES.45.36	Default
14	RONDELLA DIN 988 40*50*2	1	13.40x50x2	13.40*50*2
15	SPESSORE 69,3*79,7*0,5 ITT	2	13.69x80x05	13.69*80*05
16	DISTANZIALE H5,00	1	20.16300700	Default
17	DISTANZIALE H8,75	1	20.16300701	Default
18	TAPPO OLIO BRUG. 3/8" DIN 906 ZIN-LOC	2	37.T.3-8-906.ZL	Default
19	TAPPO SFIATO CONICO VALV. 3/8" OTTONE	1	37.TSVCO.3-8-O	Default
20	ANELLO DI TENUTA, configuration:07.40*56*8.TC	2	ANELLO DI TENUTA (07.40*56*8.TC)	07.40*56*8.TC
21	ANELLO DI TENUTA, configuration:07.40*80*8.TC	1	ANELLO DI TENUTA (07.40*80*8.TC)	07.40*80*8.TC
22	TARGHETTA R1103,00WWVA5	1	TARGHETTA R1103,00WWVA5	Default