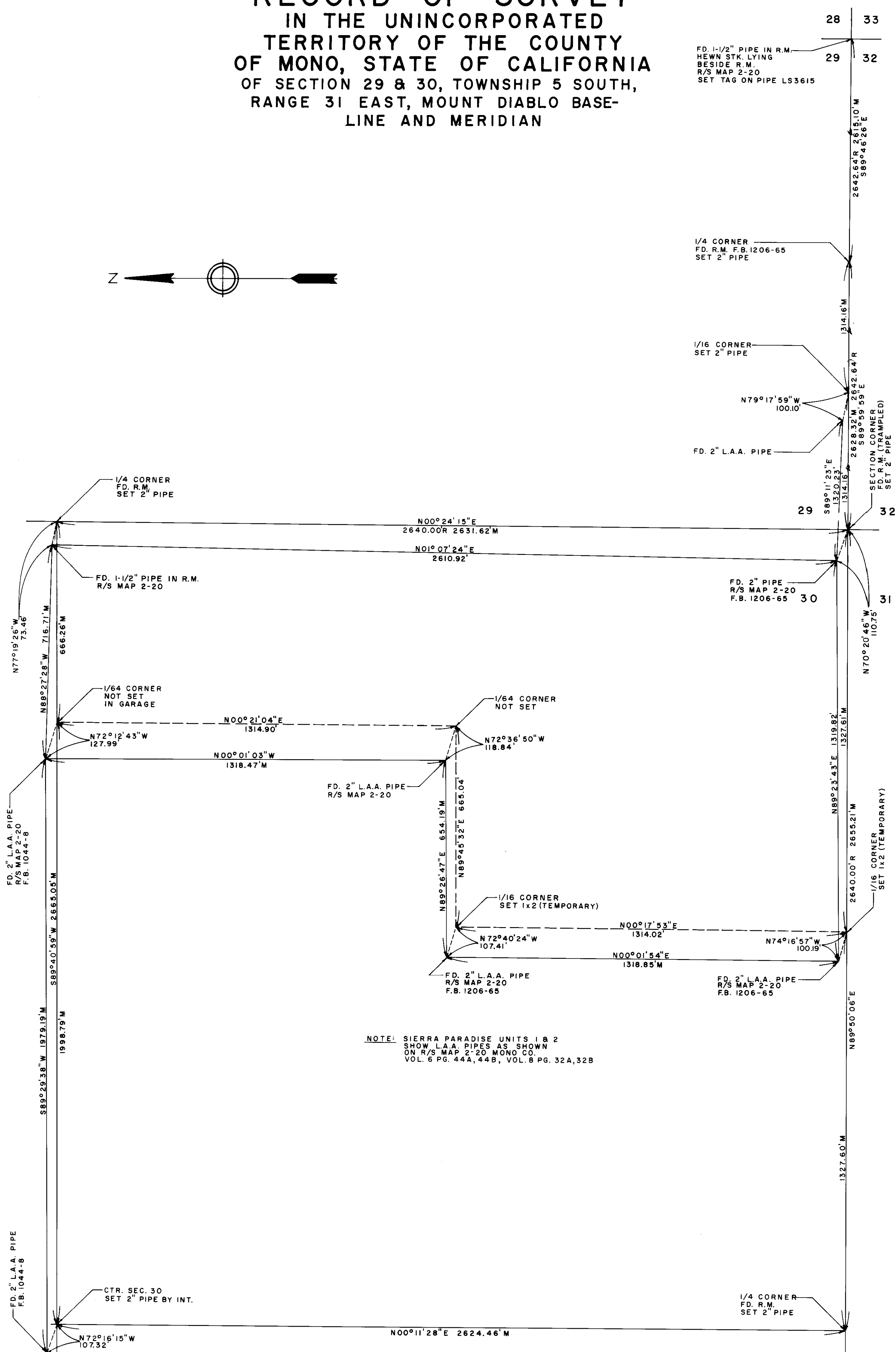


RECORD OF SURVEY  
IN THE UNINCORPORATED  
TERRITORY OF THE COUNTY  
OF MONO, STATE OF CALIFORNIA  
OF SECTION 29 & 30, TOWNSHIP 5 SOUTH,  
RANGE 31 EAST, MOUNT DIABLO BASE-  
LINE AND MERIDIAN



NOTE: SIERRA PARADISE UNITS 1 & 2  
SHOW L.A.A. PIPES AS SHOWN  
ON R/S MAP 2-20 MONO CO.  
VOL. 6 PG. 44A, 44B, VOL. 8 PG. 32A, 32B

C.E.Q. 3-75

R/S. Book 1, Pg. 20-4