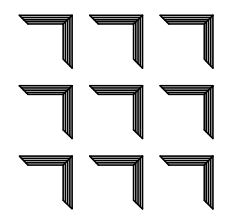


Revisions:

**White Design Group, P.C.**  
Restaurant and Interiors Consulting  
5801 EAST 41ST STREET, SUITE 712, TULSA, OKLAHOMA 74135



New Restaurant Conversion For:

**Arby's - 1632 AR-25 Bypass**

Arkansas

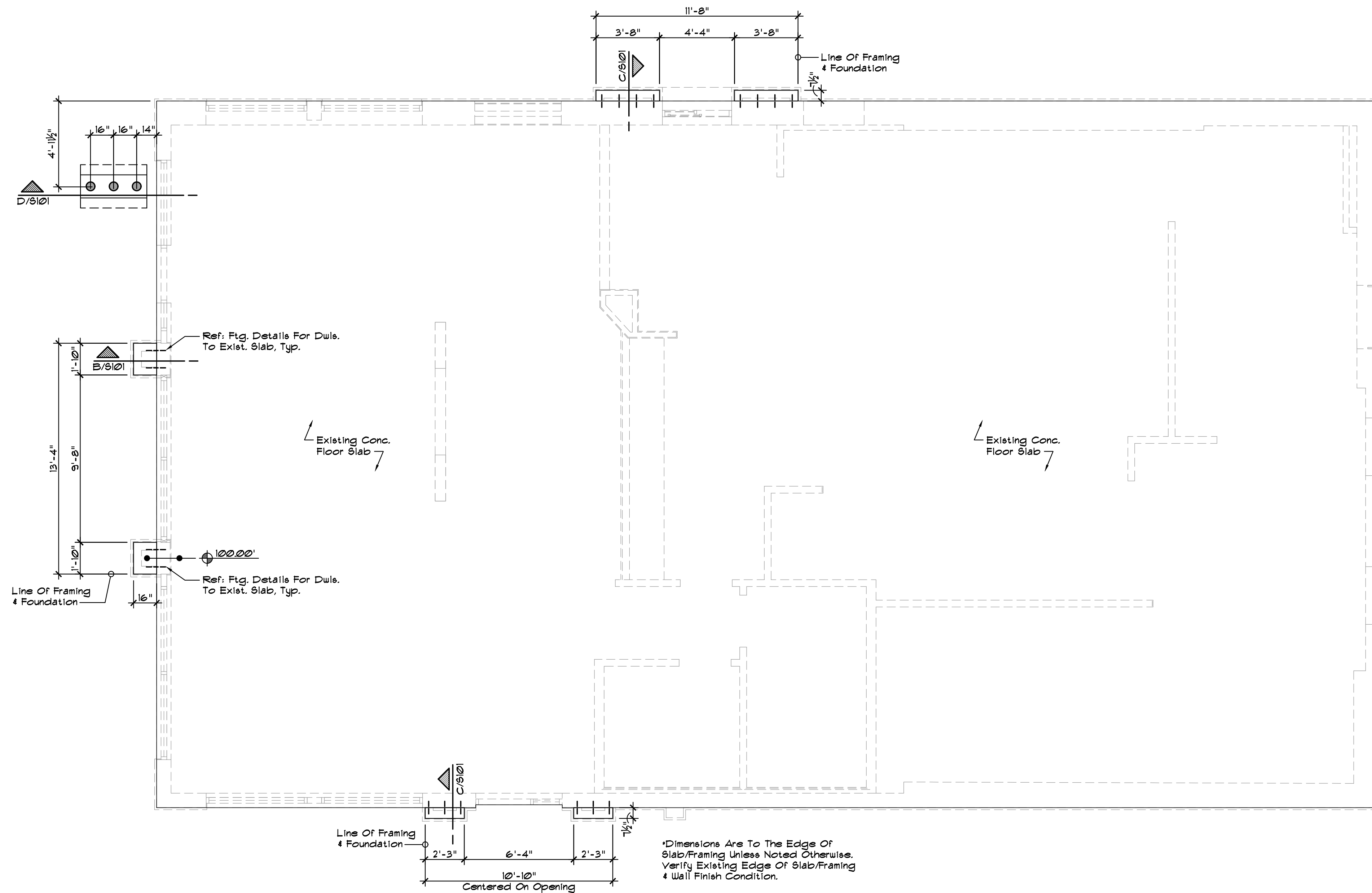
Heber Springs,

**Sheet Content**  
Foundation Plan,  
Footing Details, Column  
Base Details

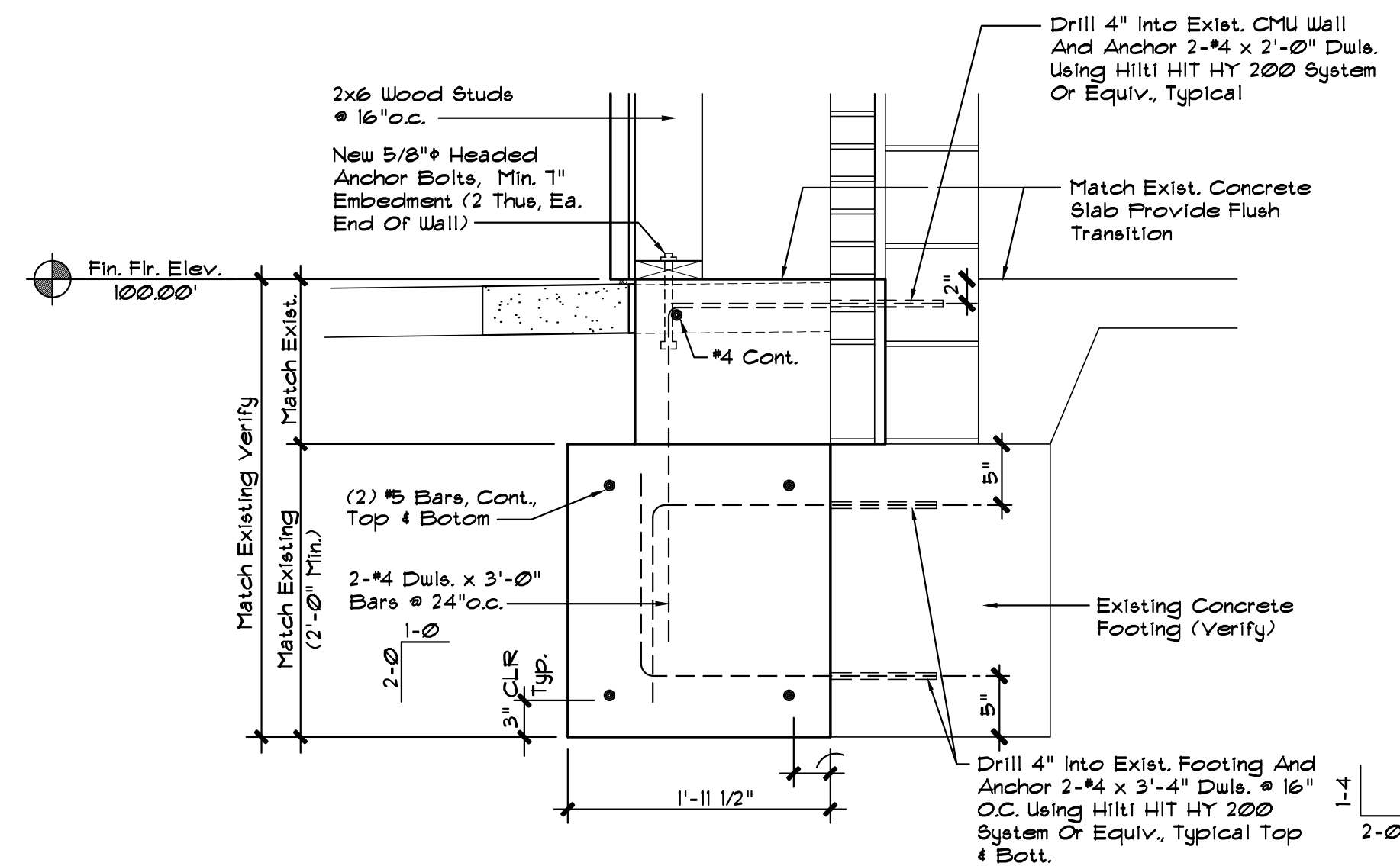
**Sheet Number**

**S101**

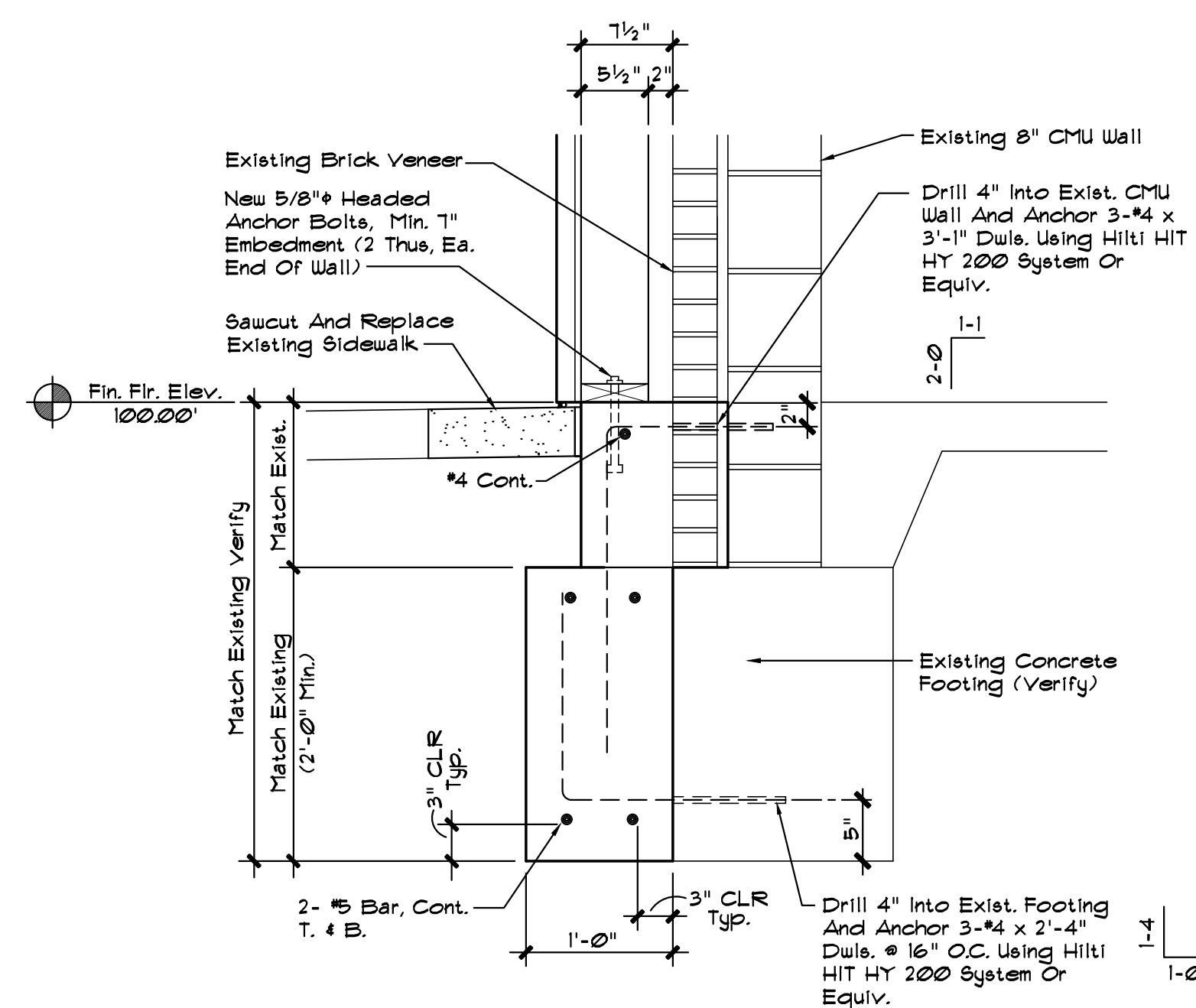
**Date: 10-29-21**



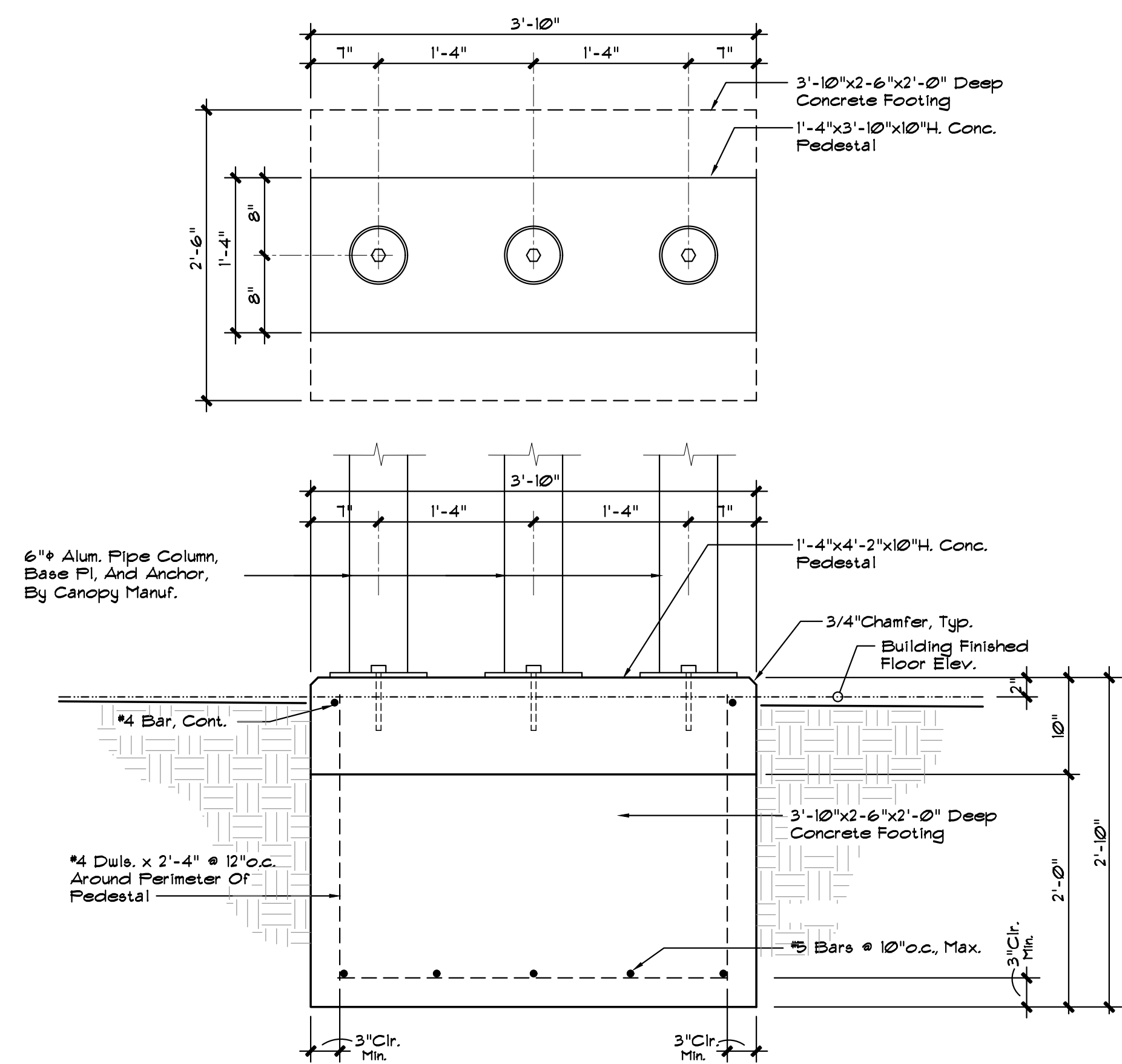
**Foundation Plan**  
Scale: 1/4"=1'-0"



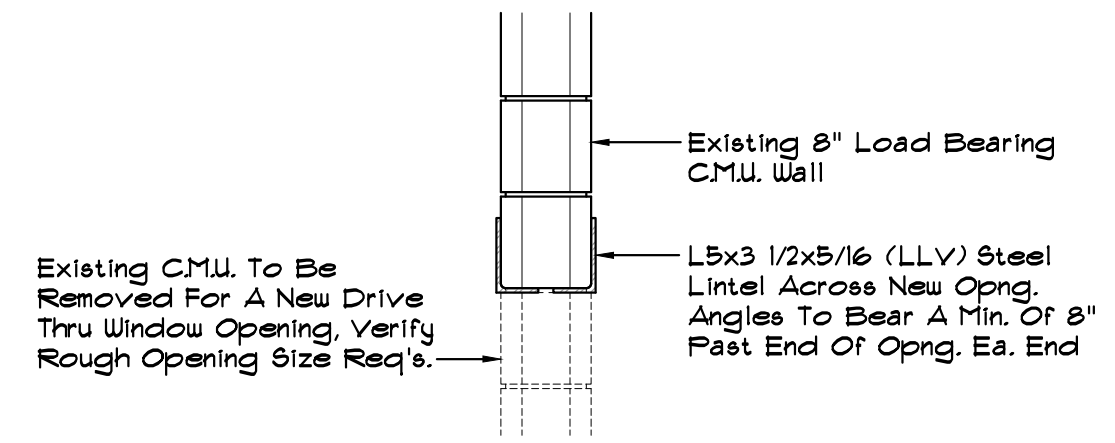
**Footing Detail**  
Scale: 1"=1'-0"



**Footing Detail**  
Scale: 1"=1'-0"



**Column Base Details**  
Scale: 1"=1'-0"



**INSTALLATION PROCEDURE**  
1. Sawcut 1/2 Through Wall & Install One Angle.  
2. Sawcut Other 1/2 Of Wall & Install Second Angle.  
3. Sawcut Joints & Remove CMU From Opening.

**Section E**  
Scale: 3/4"=1'-0"