

RECORD OF SURVEY 36-31

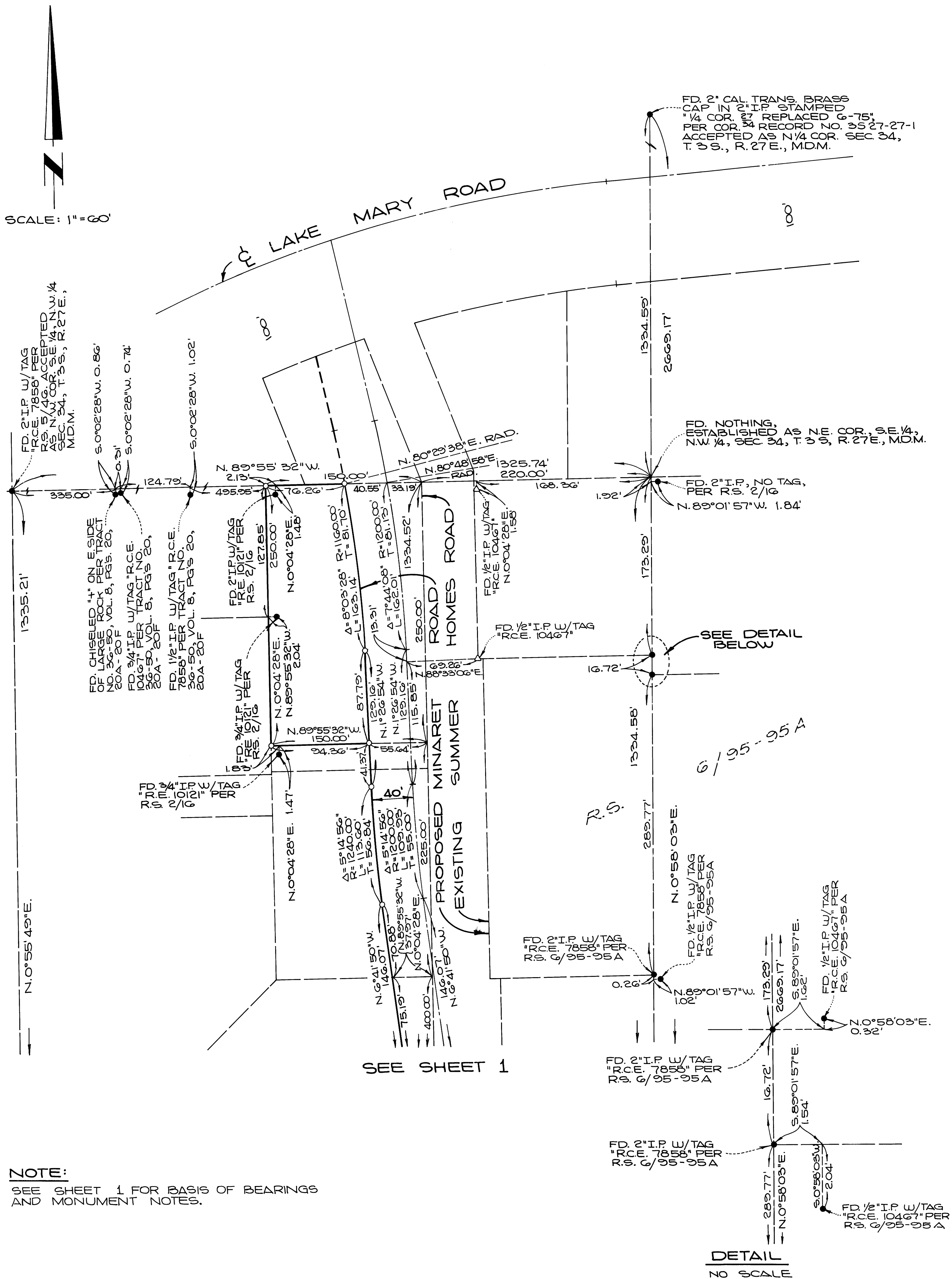
IN UNINCORPORATED TERRITORY OF MONO COUNTY, CALIFORNIA.

BEING A PORTION OF THE SOUTH-EAST QUARTER OF THE NORTH-
WEST QUARTER OF SECTION 34, TOWNSHIP 3 SOUTH, RANGE 27
EAST, MOUNT DIABLO MERIDIAN.

AUGUST 1982

GERALD F. OLDENBURG, L.S. 3246

WILLIAMSON AND SCHMID, CIVIL ENGINEERS



NOTE:

SEE SHEET 1 FOR BASIS OF BEARINGS
AND MONUMENT NOTES.

DETAIL
NO SCALE

79 259.20

8-5-A