

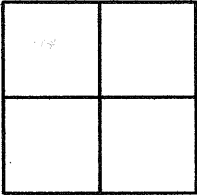
CORNER RECORD

City of BERKELEY

Document Number CR 2485

County of ALAMEDA, California

Brief Legal Description WELL MONUMENT LOCATED WITHIN SPRUCE ST.



CORNER RECORD

Government Corner ☐ Control ☐
 Meander ☐ Property ☒
 Rancho ☐ Other ☐
 Date of Survey 08/23/2005

COORDINATES (Optional)

N. _____
 E. _____
 Zone _____ Datum _____
 Elev. _____

Corner — Left as found ☐ Found and tagged ☐ Established ☐ Reestablished ☒ Rebuilt ☐

Identification and type of corner found: Evidence used to identify or procedure used to establish or reestablish the corner:
SET STANDARD COUNTY WELL MONUMENT 85'± SOUTH OF THE INTERSECTION
OF SPRUCE ST. AND REGAL RD. LOCATED WITHIN SPRUCE ST.
STAMPED LS 4520

A description of the physical condition of the monument as found and as set or reset:
FOUND AND SET POINTS AS SHOWN ON PAGE 2.

SURVEYOR'S STATEMENT

This Corner Record was prepared by me or under my direction in conformance with
 the Land Surveyors' Act on JUNE 2, 2005.

Signed Vincent H. Cunha L.S. Number LS 4520
VINCENT H. CUNHA EXPIRES 9/30/06

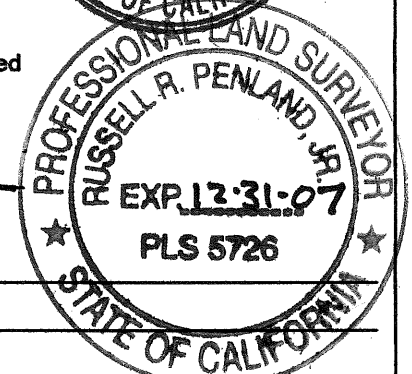
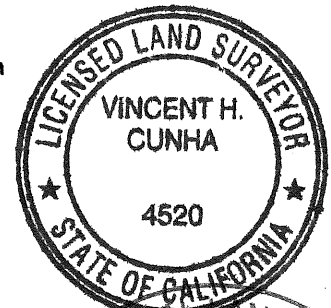
COUNTY SURVEYOR'S STATEMENT

This Corner Record was received July 20 1905 and examined
 and filed 12-3-2005.

Signed Russell R. Penland, Jr. Title COUNTY SURVEYOR

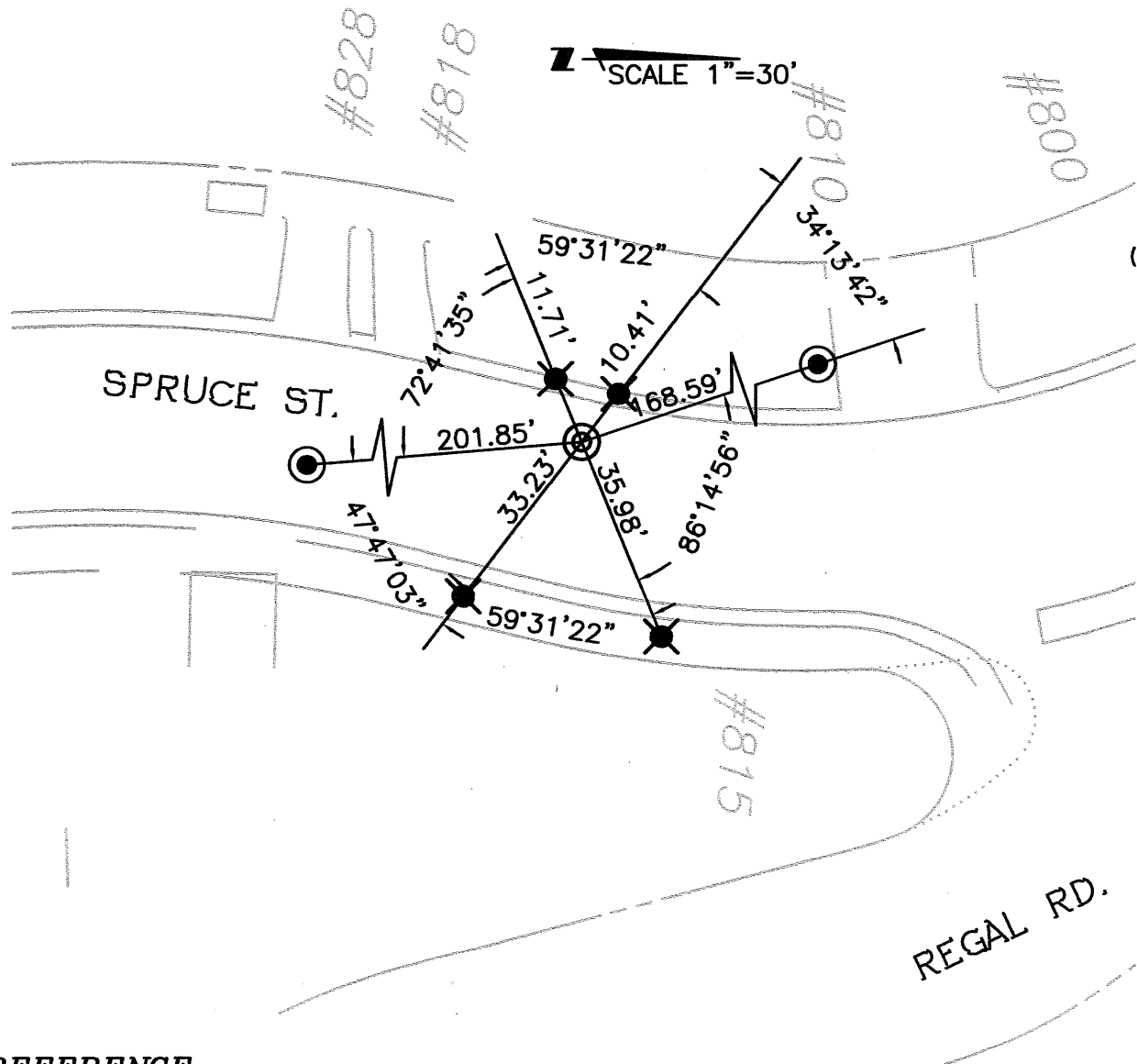
County Surveyor's Comment

SEE PRIOR CR 2411



LEGEND

- ✕ FOUND CROSS
- FOUND STANDARD STREET MONUMENT
- ✕ FOUND NAIL AND TAG LS 4520
- ◎ SET STANDARD STREET MONUMENT STAMPED LS 4520



REFERENCE

CORNER RECORD 2411, ALAMEDA COUNTY RECORDS