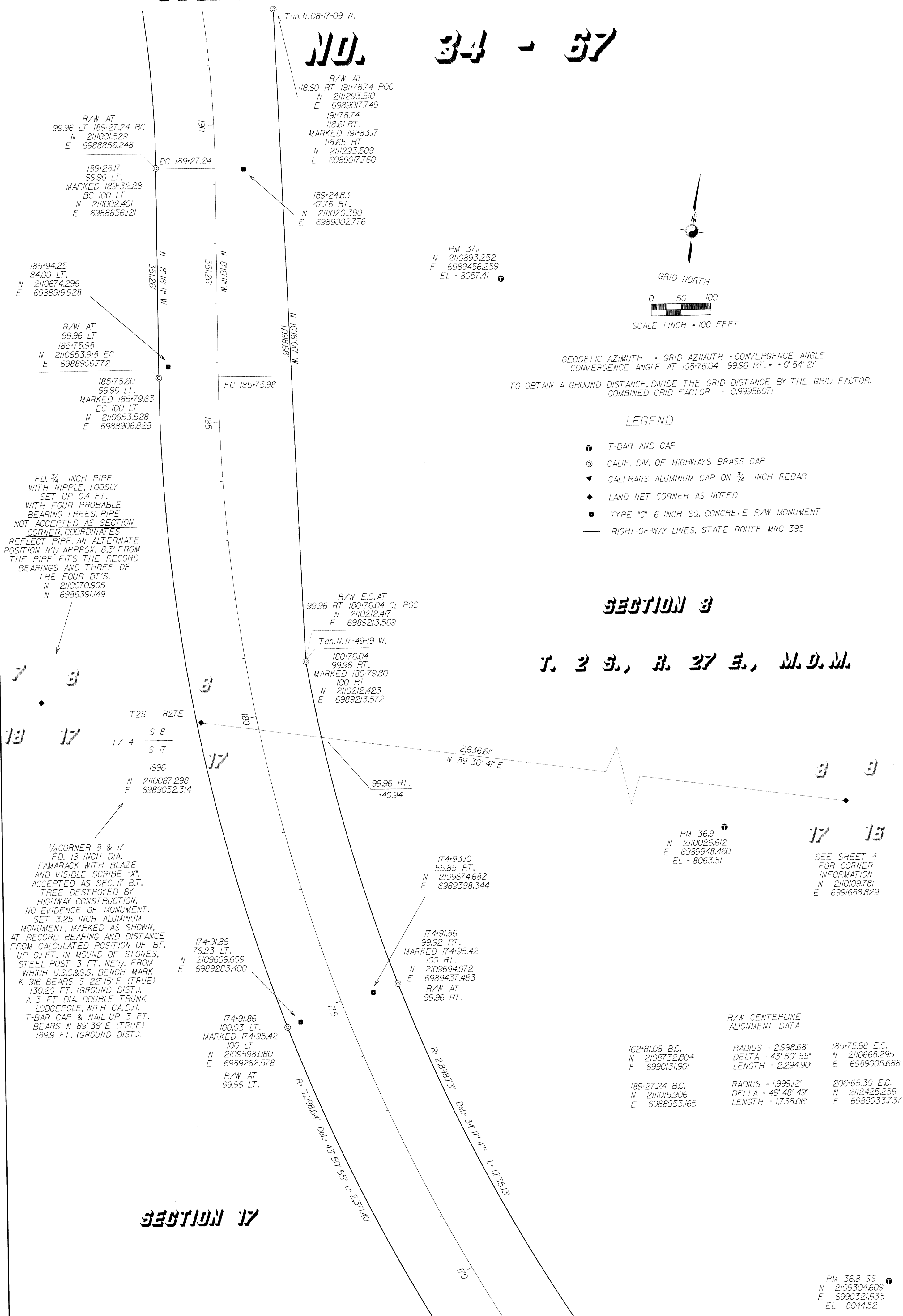


REPORT OF SURVEY

NO. 34 - 57



SECTION 17

SECTION 3

T. 2 E, R. 27 E, M. 9. M.

LEGEND

- T T-BAR AND CAP
- ⊙ CALIF. DIV. OF HIGHWAYS BRASS CAP
- ▼ CALTRANS ALUMINUM CAP ON 3/4 INCH REBAR
- ◆ LAND NET CORNER AS NOTED
- TYPE "C" 6 INCH SQ. CONCRETE R/W MONUMENT
- RIGHT-OF-WAY LINES, STATE ROUTE MNO 395

GEODETIC AZIMUTH = GRID AZIMUTH + CONVERGENCE ANGLE
 CONVERGENCE ANGLE AT 108+76.04 99.96 RT. = ° 54' 21"
 A GROUND DISTANCE, DIVIDE THE GRID DISTANCE BY THE GRID FACTOR.
 COMBINED GRID FACTOR = 0.99956071

FD. 3/4 INCH PIPE
WITH NIPPLE, LOOSLY
SET UP 0.4 FT.
WITH FOUR PROBABLE
BEARING TREES. PIPE
NOT ACCEPTED AS SECTION
CORNER COORDINATES
REFLECT PIPE, AN ALTERNATE
POSITION N'ly APPROX. 8.3' FROM
THE PIPE FITS THE RECORD
BEARINGS AND THREE OF
THE FOUR BT'S.
N 2110070.905
N 6986391.49

1/4 CORNER 8 & 17
FD. 18 INCH DIA.
TAMARACK WITH BLAZE
AND VISIBLE SCRIBE "X".
ACCEPTED AS SEC. 17 B.T.
TREE DESTROYED BY
HIGHWAY CONSTRUCTION.
NO EVIDENCE OF MONUMENT.
SET 3.25 INCH ALUMINUM
MONUMENT, MARKED AS SHOWN.
AT RECORD BEARING AND DISTANCE
FROM CALCULATED POSITION OF BT.
UP O.F.T. IN MOUND OF STONES,
STEEL POST 3 FT. NE'ly. FROM
WHICH U.S.C.&G.S. BENCH MARK
K 916 BEARS S 22°15' E (TRUE)
130.20 FT. (GROUND DIST.).
A 3 FT DIA. DOUBLE TRUNK
LODGEPOLE, WITH CA.D.H.
T-BAR CAP & NAIL UP 3 FT.
BEARS N 89°36' E (TRUE)
189.9 FT. (GROUND DIST.).

SEE SHEET 4
FOR CORNER
INFORMATION
N 2110109.781
E 6991688.829

R/W CENTERLINE
ALIGNMENT DATA

162+81.08 B.C.
N 2108732.804
E 6990131.901

RADIUS = 2,998.68'
DELTA = 43° 50' 55"
LENGTH = 2,294.90'

185+75.98 E.C.
N 2110668.295
E 6989005.688

189+27.24 B.C.
N 2111015.906
F 6988955.165

RADIUS = 1,999.12'
DELTA = 49° 48' 49"
LENGTH = 1,738.06'

206-65.30 E.C.
N 2112425.256
E 6988033.737

PM 36.8 SS
N 2109304.609
E 6990321.635
FI = 8044.52