



PANDA EXPRESS, INC.
1683 Walnut Grove Ave.
Rosemead, California
91770
Telephone: 626.799.9898
Facsimile: 626.372.8288

All ideas, designs, arrangement and plans indicated or represented by this drawing are the property of Panda Express Inc. and were created for use on this specific project. None of these ideas, designs, arrangements or plans may be used by or disclosed to any person, firm, or corporation without the written permission of Panda Express Inc.

REVISIONS:	
OWNER REVISIONS	01-27-22

ISSUE DATE:	
ISSUE FOR PERMIT	01-29-21
ISSUE FOR BID	04-30-21
ISSUE FOR BID 2	11-02-21
ISSUE FOR BID (DT)	02-04-22

DRAWN BY: AE

PANDA PROJECT #: D8164
PANDA STORE #: -
ARCH PROJECT #: 261-321



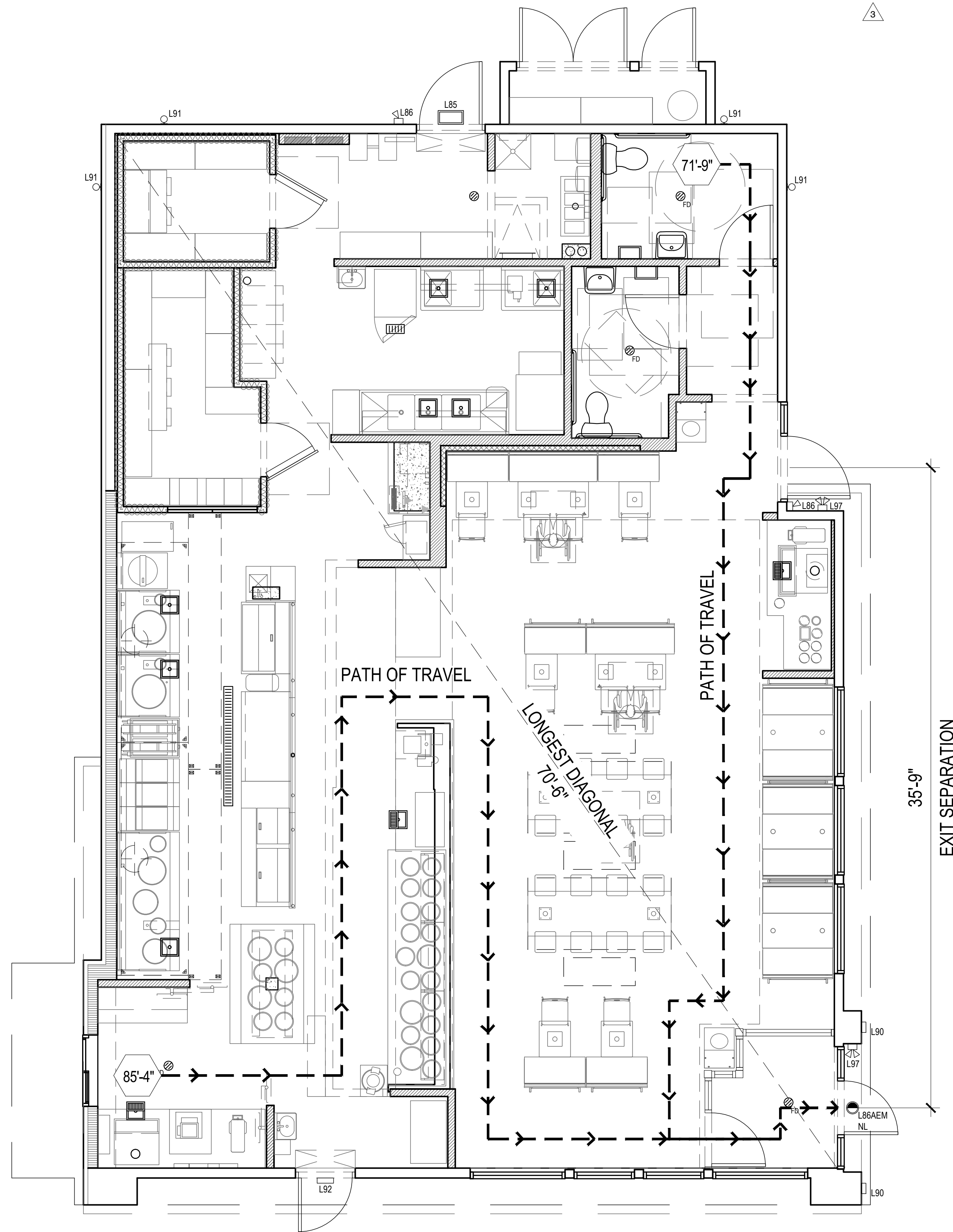
PANDA EXPRESS
TRUE WARM & WELCOME
JEFFERSON AVE. & MORRIS DR.
NEWPORT NEWS, VA 23605

G-006
LIFE SAFETY PLAN

TRUE WARM & WELCOME 2300 R6

MEANS OF EGRESS	
# OF EXITS: (2 REQUIRED BY IRC)	TOTAL: 3 (2 PUBLIC, 1 KITCHEN ONLY)
EXIT WIDTH PROVIDED (EXIT WIDTH REQUIRED (86 x 0.20) = 14 MIN.: 32")	TOTAL: 104" (34" x 48" x 34")
MAXIMUM TRAVEL DISTANCE TO EXITS	85'-4"
EXIT SEPARATION	70'-6" LONGEST DIAGONAL 35'-9" REQUIRED 35'-9" PROVIDED

OCCUPANT LOAD CALCULATION		
INDOOR DINING	902 SQ. FT. / (15 / SQ. FT.) =	61
KITCHEN	1,085 SQ. FT. / (200 / SQ. FT.) =	06
TOILET/VESTIBULE/STORAGE	199 SQ. FT. / (0 / SQ. FT.) =	00
COOLER/FREEZER ROOMS	195 SQ. FT. / (0 / SQ. FT.) =	00
	TOTAL =	67
OUTDOOR DINING	00 SQ. FT. / (15 / SQ. FT.) =	00
	TOTAL OCCUPANT LOAD =	67



LIFE SAFETY PLAN	1
Scale= 1/4" = 1'-0"	G-006